

# THE FRICK COLLECTION

MEMBERS' MAGAZINE FALL 2004 / 2003 ANNUAL REPORT





## LETTER FROM THE DIRECTOR

This issue of the *Members' Magazine* is a special one for me, as it marks my first anniversary as Director of The Frick Collection. Coincidentally, there is another reason for celebration: The Frick Collection has officially terminated its status

as a private operating foundation and is now recognized as a publicly supported charity. This transition was made possible because, over the past five years, the Frick has generated nearly a third of its operating revenue from gifts, grants, and memberships. We are grateful to all of our supporters who helped us achieve this new status, which in turn will assist us significantly as we intensify our fundraising efforts in the coming years.

We are pleased to have as our fall exhibition *European Bronzes from the Quentin Collection*, a presentation of powerful, elegant works by several generations of master sculptors. Each of the forty sculptures to be shown demonstrates the extraordinary invention and technical refinement characteristic of works made when the tradition of the European statuette was at its height.

In December and January, visitors to the Frick will have a rare opportunity to see Raphael's celebrated *La Fornarina*, which has never before been exhibited in the United States. We are grateful to the National Gallery of Art at the Palazzo Barberini in Rome for lending us this haunting portrait, as well as to the Foundation for Italian Art & Culture for helping to arrange the loan. This presentation is part of our regular program, inaugurated in recent years, of exhibiting single works of unusual quality that complement our permanent holdings.

You may have noticed subtle changes to both the Boucher and Fragonard Rooms. In the Boucher Room, Antoine Coysevox's marble portrait of *Louis XV as a Child of Six* is displayed on the mantel, while *Bust of a Young Girl*, after François-Jacques-Joseph Saly, has been mounted on a pedestal next to the panel of Boucher's *Sculpture*, in which a young boy is depicted carving this work. The progress in science and art celebrated by Boucher's panels is complemented by the addition of Martin Carlin's ingenious mechanical writing table with Sèvres porcelain plaques. Our magnificent pair of commodes by Pierre Dupré has been moved from the Fragonard Room into the East Gallery, where the addition of furniture brings a sense of domestic warmth to the large space. The removal of this and several other pieces from the room allows visitors greater access to the works of art displayed there. These are among our ongoing efforts to show the collections to the best possible effect.

On October 18 we will host our seventh annual Autumn Dinner, which this year will honor Robert Hughes, author and former art critic for *Time* magazine. The Autumn Dinner generates nearly \$400,000 annually for the institution and provides critical funding to many of our programs. Such events have become increasingly important to the Frick in recent years, and we appreciate your continued support.

We look forward to a busy autumn, and I hope to see you in the galleries at one or all of our upcoming events.

Anne L. Poulet  
Director

## Board of Trustees

Helen Clay Chace  
*President*

Howard Phipps, Jr.  
*Vice President*

L. F. Boker Doyle  
*Treasurer*

I. Townsend Burden III  
*Secretary*

Peter P. Blanchard III

Margot C. Bogert

Walter Joseph Patrick Curley

Walter A. Eberstadt

Emily T. Frick

Henry Clay Frick II, *Chairman Emeritus*

Nicholas H. J. Hall, *ex officio*

Paul G. Pennoyer, Jr., *Trustee Emeritus*

Juan Sabater

Melvin R. Seiden

## Council of The Frick Collection

Nicholas H. J. Hall  
*Chairman*

W. M. Brady

Jonathan Brown

*Vice Chairmen*

Julian Agnew

Irene Roosevelt Aitken

Jean A. Bonna

Vivien R. Clark

Anthony Crichton-Stuart

Hester Diamond

Peter Duchin

Robert Garrett

Mauro A. Herlitzka

Jon Landau

Douglas B. Leeds

Martha Loring, *ex officio*

Diane Allen Nixon

Richard E. Oldenburg

Paul G. Pennoyer, Jr.

Charles Ryskamp, *Director Emeritus*

Stephen K. Scher

Melvin R. Seiden

Deirdre C. Stam

Wynant D. Vanderpoel III

George Wachter

Isabel S. Wilcox

Nina Zilkha

## The Frick Collection Hours

10:00 to 6:00 Tuesday through Saturday;

1:00 to 6:00 Sundays; closed Mondays and holidays

## Frick Art Reference Library Hours

10:00 to 5:00 Monday through Friday; 9:30 to 1:00

Saturdays; closed Sundays, holiday weekends,

Saturdays in June and July, and the month of August

# THE FRICK COLLECTION

MEMBERS' MAGAZINE FALL 2004 / 2003 ANNUAL REPORT



## UPCOMING EXHIBITION

**European Bronzes from the Quentin Collection**

PAGE 2



## PERMANENT COLLECTION

**A Gilded Age *Studiolo*: The Enamels Room in The Frick Collection**

PAGE 6

## COLLECTION NEWS

**Raphael's *Fornarina* on Loan from the Palazzo Barberini in Rome**

PAGE 10



## EDUCATION

**Frick Awards Prize to Student Essayist for Excellence in Writing**

PAGE 11



## LIBRARY

**Artist Sketchbooks and Facsimiles Provide Glimpse into Artistic Process**

PAGE 12



## COMMUNITY

**Programs and Member Events:**

**Art Dealers Breakfast, Dialogues on Art, Spring Party**

PAGE 14

## TABLE OF CONTENTS

**The Frick Collection 2003 Annual Report**

PAGE 16

## FALL CALENDAR

**Lectures, Concerts, Museum Shop**

PAGE 40

## ON OUR COVER:

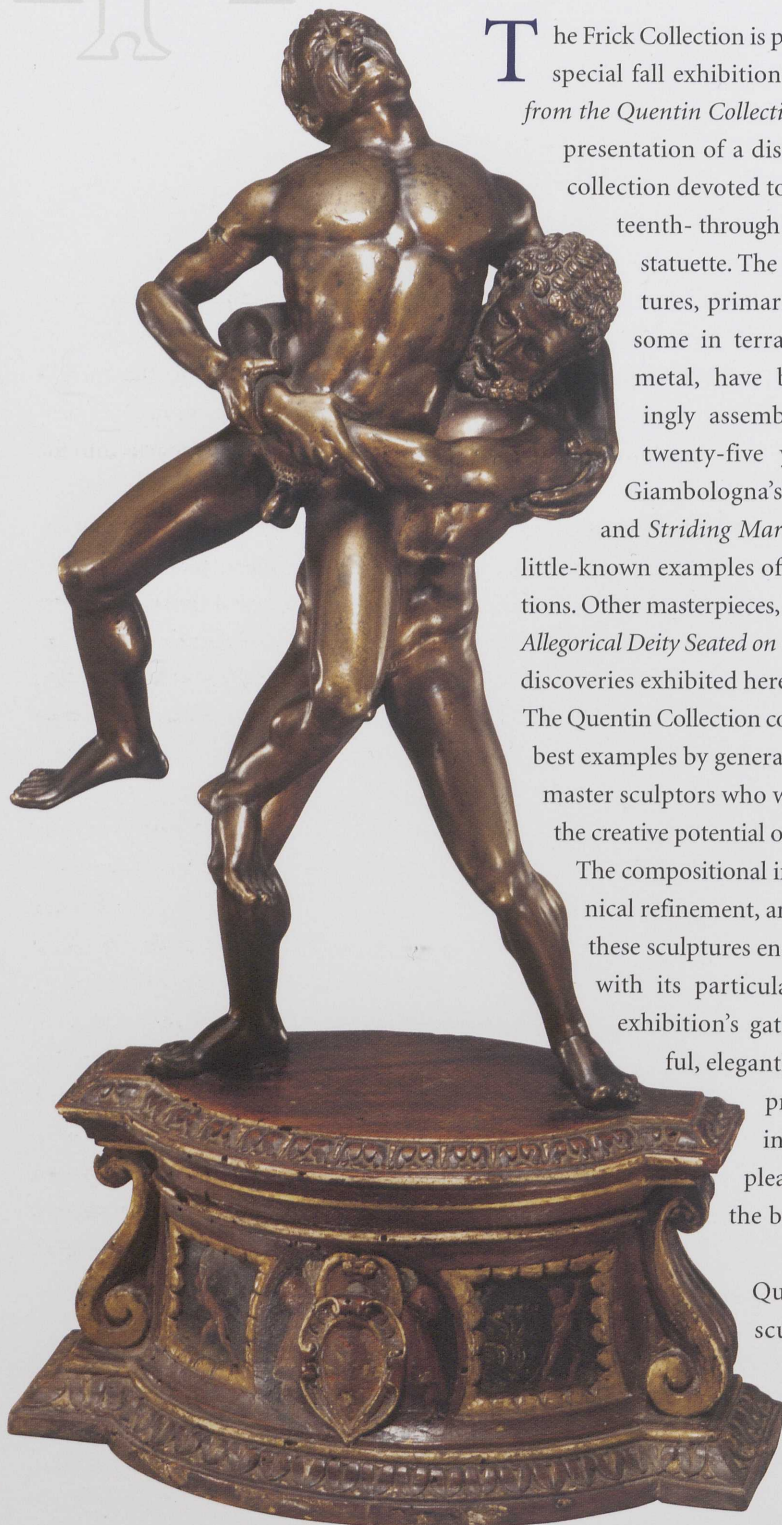
**Jean de Court (Master I. C.),**  
detail of *The Adoration of the Shepherds*,  
c. 1555–85, enamel plaque, The Frick Collection

PHOTOGRAPH BY RICHARD DI LIBERTO

# EUROPEAN BRONZES

## FROM THE QUENTIN COLLECTION

September 28 through January 2, 2005



The Frick Collection is pleased to have as its special fall exhibition *European Bronzes from the Quentin Collection*, the first public presentation of a distinguished private collection devoted to the art of the sixteenth- through eighteenth-century statuette. The almost forty sculptures, primarily in bronze with some in terracotta or precious metal, have been discriminately assembled over the last twenty-five years. Many, like Giambologna's *Sleeping Nymph* and *Striding Mars*, are outstanding little-known examples of famous compositions. Other masterpieces, like the mysterious *Allegorical Deity Seated on Grotesques*, are new discoveries exhibited here for the first time. The Quentin Collection contains some of the best examples by generations of European master sculptors who were challenged by the creative potential of the human form. The compositional inventiveness, technical refinement, and sheer quality of these sculptures endow the collection with its particular character. The exhibition's gathering of powerful, elegantly idealized nudes

provides a focused introduction to the pleasures offered by the bronze statuette.

At the Frick the Quentin Collection sculptures will be displayed so that

visitors can appreciate the union of naturalistic illusion and technical artistry that is the hallmark of the greatest figurative statuettes. Most of the sculptures are shown freestanding and without vitrines. In the instance of Giambologna's *Striding Mars* (opposite page), this freedom of viewpoint allows us to experience how the late sixteenth-century master used the expressive logic of pose to identify the god of war with martial readiness.

His eyes fixed on the enemy, *Mars* halts his stride, exploiting the force of arrested motion to swing his body and sword arm backward in preparation for attack. His free arm sweeps forward to balance his rotating movement, his hand frozen at the instant it most resembles a gesture of command. By depicting *Mars* ready to strike, Giambologna celebrates the power and resolve leaders needed to wage war, or to prevent it. Late Renaissance rulers appreciated this ennobling message, and the *Striding Mars* became a featured addition to their collections. No less coveted by princes and kings for its masterful artistry, Giambologna's *Mars* displays the sculptor's ability to depict the subtle movements of muscles bunching under skin, of eyes tightening in concentration, of lips parting to draw breath. This virtuoso combination of illusionism and technique is even more astonishing when one considers that the *Mars* is only about fifteen inches tall.

The *Mars's* focused compression is typical of statuettes, for these small works were

*Hercules and Antaeus*, probably northern Italy, 1500–25, bronze on late Renaissance base of painted wood. All works illustrated are from the Quentin Collection.



Like the *Allegorical Deity*, each small bronze was made to evoke multiple associations that captivated the rulers and wealthy educated classes who collected them. The more we know about this history, the richer our understand-

LEFT:  
Giambologna (1529–1608), *Sleeping Nymph*, bronze modeled before 1584

BELOW:  
Giambologna, overall and detail of *Striding Mars*, bronze modeled between late 1560s and early 1570s and cast before 1577, probably by Fra Domenico Portigiani

intended to delight and engage their audience over countless viewings. Such is the case of the *Allegorical Deity Seated on Grotesques* (page 4, top), sometimes attributed to the Dutch sculptor Adrian de Vries. Although the subject of this complex group has thus far remained a mystery, it is likely that the deity who sits astride bat-winged monsters represents Saturn, one of the four planetary gods in Renaissance depictions of the cosmos. In this role, Saturn was associated with aspects from other universal quaternary groups: from the four elements, earth; from the seasons, autumn; from the times of day, twilight; from the ages of man, maturity; and from the temperaments, melancholy. As Saturn, the *Allegorical Deity* is depicted as the lord of twilight, carried through the heavens by bat-winged creatures symbolic of that time of day. He is seated on ripened fruit and holds leaf-studded branches to signify that he rules autumn, the harvest season. His robust body and bearded face are signs of maturity, the penultimate stage of life, and his introverted expression conveys his state of melancholy. The *Allegorical Deity's* encompassing conceptual elegance attests to the inspired efforts of sculptors who, like all Renaissance artists, believed their creative powers were engendered under Saturn's influence.

ing of this art form becomes. During the Renaissance collectors and sculptors often looked to classical antiquity for inspiration. The anonymous early sixteenth-century northern Italian master of the *Hercules and Antaeus* (page 2) based his composition on an over-life-size classical marble fragment, then known (even in its ruined state) as "the most beautiful statue in Rome." By imaginatively reconstructing the monumental, fragmentary marble in small-scale bronze, the sculptor rivaled the greatest achievements of the past and literally placed those achieve-

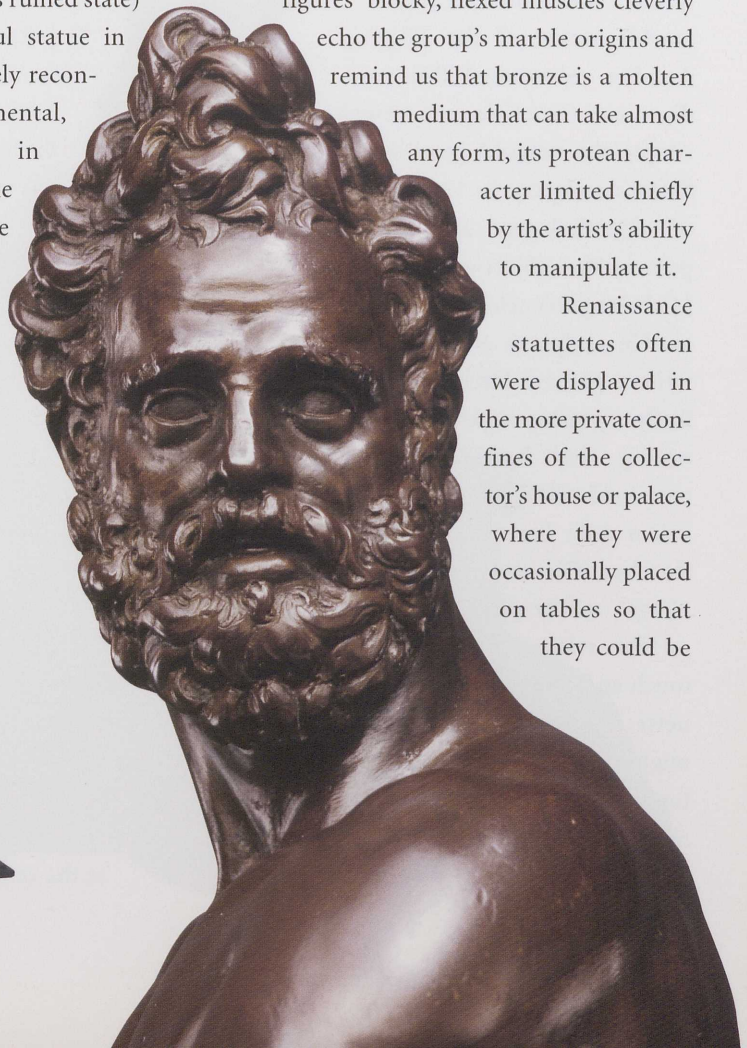
ments, miraculously restored, into the hands of his patrons. The sculptor also masterfully exploited his medium, using the metal's inherent tensile strength to mimic Hercules' strength: as the hero hoists Antaeus into the air, the giant's legs dangle without the strutted supports required by the original marble.

The composition's angular geometry and the figures' blocky, flexed muscles cleverly

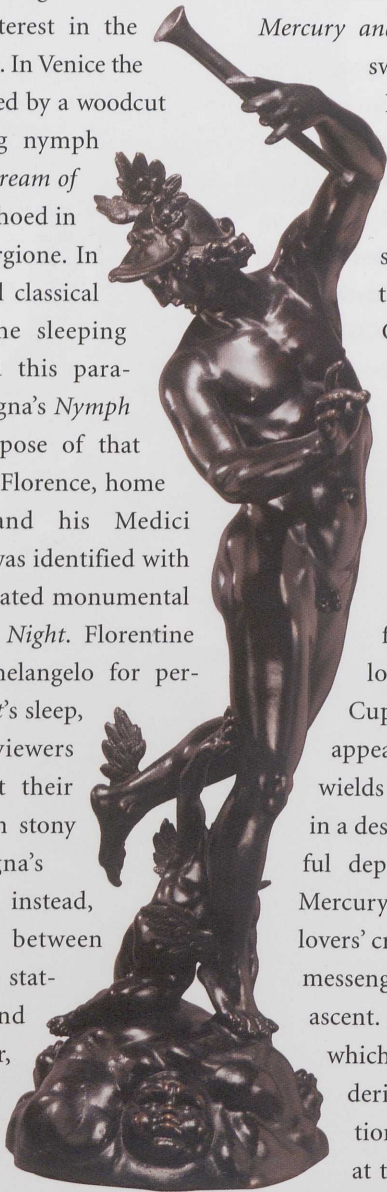
echo the group's marble origins and remind us that bronze is a molten medium that can take almost any form, its protean character

limited chiefly by the artist's ability to manipulate it.

Renaissance statuettes often were displayed in the more private confines of the collector's house or palace, where they were occasionally placed on tables so that they could be



turned, touched, and held. This intimate relationship between viewer and object inspired sculptors. Sometime before 1584 Giambologna crafted the smooth, lacquered surfaces of the voluptuous *Sleeping Nymph* (page 3, top) to beguile the viewer's sense of touch as well as sight. Giambologna's sensual conception springs from the sixteenth-century interest in the sleeping female figure. In Venice the subject was popularized by a woodcut image of a sleeping nymph from the book *The Dream of Poliphilus* and was echoed in the paintings of Giorgione. In Rome a monumental classical marble statue of the sleeping Ariadne represented this paradigm, and Giambologna's *Nymph* adopts the languid pose of that famous antiquity. In Florence, home of Giambologna and his Medici patrons, the subject was identified with Michelangelo's celebrated monumental marble sculpture of *Night*. Florentine writers praised Michelangelo for perfectly capturing *Night's* sleep, noting that her viewers remained silent, lest their voices wake her from stony slumber. Giambologna's *Nymph* wittily plays, instead, on the relationship between touch and the bronze statuette. Though sound might not rouse her, touch—the sense she most provocatively invites—could have



the power to awaken this *Sleeping Nymph* from dreamlike repose.

Baroque statuettes, like Francesco Fanelli's *Mercury and Cupid* (below) were often larger than their Renaissance counterparts.

At almost three feet tall, the *Mercury and Cupid's* size and dramatic, sweeping forms were meant to harmonize with grand public spaces, like the picture galleries typical of the seventeenth century. The sculpture's subject is drawn from Apuleius' tale of the star-crossed lovers Cupid and Psyche and illustrates Mercury about to proclaim that Psyche must be returned to the bondage of Cupid's jealous mother, Venus. Fanelli depicts the winged god with his messenger's trumpet in hand, poised at the instant of flight on cloudy winds that loft him skywards. The little Cupid clutching Mercury's leg appears heavy by contrast, as he wields his weight like a ballast stone in a desperate attempt to halt the fateful departure. Cupid merely earns Mercury's backward glance, and the lovers' cruel separation is sealed by the messenger god's elegant, inexorable ascent. Fanelli's complex storytelling, which was rare in earlier statuettes, derives from the pictorial tradition and challenges it. Displayed at the center of a picture gallery,



elevated and isolated on a pedestal, the *Mercury and Cupid* would have engaged viewers with a directness impossible for paintings. Fanelli creates his narrative with the dramatic compression typical of sculpture. The composition's graceful torsion invites viewers to walk round the work and unfold the tale.

The sculptor's concise language of pose and gesture is movingly expressed by Massimiliano Soldani's *Pietà* (page 5). Made during the early eighteenth century when Soldani was a master medalist to the Florentine grand dukes, the *Pietà* is one of the latest works in the Quentin Collection and one of the few in terracotta (fired clay). Soldani's dead Christ with mourning angels is a *compianto*, an image intended for use during the Catholic devotions, which aroused compassionate empathy for the Savior's passion and death. Christ's body is gently elevated toward the viewer, exposing the bloody lance wound at his side. The crown of thorns and nails lie on the stony ground below. Beside them, closest to the viewer's gaze, Christ's riven hand opens in lifeless supplication. The sorrowful angels, who lovingly gaze at the Savior's face and kiss his wounds, were meant to serve as exempla for the devotee as he knelt before this image in private contemplation. The

loose, masterful freedom with which Soldani modeled the wet clay tempers the harrowing subject and endows the sculpture with a hushed, graceful lyricism that inspires meditation. In Soldani's hands, the *Pietà* is rendered compellingly beautiful. Many larger and more complex versions that include the Virgin accompanied by numerous angels were produced by Soldani both in terracotta and bronze, and in porcelain after his death. The Quentin *Pietà*, however, is the only surviving version of this composition by Soldani in any medium. The *Pietà*'s rarity, refinement, and distilled emotional intensity stand as

hallmarks of the memorably beautiful sculptures in the Quentin Collection.—  
*Denise Allen, Associate Curator*

---

*Presentation of European Bronzes from the Quentin Collection is made possible, in part, through the generosity of The Quentin Foundation with additional support from the Fellows of The Frick Collection. The exhibition is accompanied by a scholarly catalogue co-authored by Manfred Leithe-Jasper, Director Emeritus, Department of Sculpture and Decorative Arts at the Kunsthistorisches Museum Vienna, and*

*Patricia Wengraf, sculpture dealer. The lavishly illustrated catalogue introduces many previously unknown sculptures and contains new research and technical data. It is available in the Museum Shop.*

OPPOSITE PAGE, TOP:

Attributed to **Adrian de Vries** (c. 1556–1626) or to an **anonymous European master**, *Allegorical Deity Seated on Grotesques*, c. 1600, bronze

OPPOSITE PAGE, BOTTOM:

**Francesco Fanelli** (1577–AFTER 1657?), *Mercury and Cupid*, early seventeenth century, bronze

BELOW:

**Massimiliano Soldani-Benzi** (1656–1740), *Pietà with Two Putti*, probably 1715, terracotta on original ebony base



# A GILDED AGE *STUDIOLO*: THE ENAMELS ROOM IN THE FRICK COLLECTION

In April 1916, legendary art dealer Joseph Duveen invited Mrs. Henry Clay Frick to accompany him to The Metropolitan Museum of Art to see the exhibition of the late J. P. Morgan's renowned collection. Following intense speculation about the fate of this collection, Morgan's heirs had decided to sell most of the objects to cover inheritance taxes. Duveen bought a number of pieces, and he was anxious to facilitate a sale to the Frick family. His note to Mrs. Frick specifically suggested looking at "Limoges, Bronzes, and Majolica," and indeed within two months, Henry Clay Frick purchased a magnificent group of Limoges enamels and bronze sculptures. How were these objects selected, by whom, and how were they displayed in the Frick house?

And what was the Enamels Room before the purchase of the enamels? These questions were raised during the 2003 refurbishment of the room. The resources of The Frick Collection archives, The Morgan Library, and The Metropolitan Museum of Art's Duveen Brothers archives provide some answers and offer a fascinating glimpse into Gilded Age collecting and display.

The enamels prized by Frick were produced in Limoges, France, in the late fifteenth through the early seventeenth century. These so-called painted enamels were made by applying liquid glass to a copper plate and then firing it, often repeatedly, to create multiple layers. Pieces were frequently enriched with gilding, and sometimes colored foils were used under



the enamel to create a shimmering iridescence, as in the Muses' garments in the platter at right. Masterpieces of this medium were specially commissioned by church dignitaries, nobles, and even French monarchs, while lesser-quality enamels were produced in multiples for sale to patrons of more modest means. The Frick's extraordinary plaque by Léonard Limousin, left, is a unique work commissioned by the noble Guise family, in which militant Catholics are depicted crushing Protestant heretics.

Though we are accustomed to seeing many types of enameled objects displayed together as *objets de vertu*, these pieces originally served many different functions. Triptychs with religious scenes were portable



RICHARD DI LIBERTO

ABOVE:

**Léonard Limousin**, *presumed portrait of Antoine de Bourbon, King of Navarre*, c. 1560–77, enamel plaque. All objects illustrated are in The Frick Collection.

LEFT:

**Léonard Limousin**, *Triumph of the Eucharist and of the Catholic Faith*, c. 1561, enamel plaque



devotional works for the homes of peripatetic Renaissance nobles and clergy. Lavish tableware—including ewers, bowls, and platters—was displayed, rather than used, on elegant credenzas, while jewel-like enamel portraits offered a virtuoso way of recording a subject's likeness, such as the snapshot-sized portrait at left. Some enamels were set into wall panels and doors, as in one royal suite designed for Catherine de' Medici in the Hôtel de la Reine in Paris.

Interest in these enamels revived during the nineteenth-century Romantic movement in France, with its emphasis on medieval and Renaissance history and the arts. Several legendary collectors in Paris—including Prince Soltykoff, Frédéric Spitzer, and the Rothschilds—amassed large collections of Renaissance decorative arts, including enamels. Since most French Limoges enamels originally were intended for domestic display, it seems fitting that, centuries later, they again were shown in the grandest domestic interiors; the so-called *goût Rothschild* would be influential for Gilded Age collectors in America, such as Morgan, and later Henry Walters, William Randolph Hearst, and Frick.

The dispersal of the late J. P. Morgan's extraordinary holdings was an unparalleled opportunity for Frick and others to

augment their collections. The first Morgan objects Frick bought were Chinese porcelains and furniture in March 1915. That sale was made through Joseph Duveen, whom Frick would later accuse of letting a few choice porcelains be sold by his partner, "Uncle Henry" Duveen. Thus in May 1916, when Frick was finalizing the selection of Morgan enamels and bronzes he wished to purchase, he sent Duveen a stinging missive warning, "The essence of our understanding . . . was, I was to have all of the finest bronzes or limoges in the collections purchased by you from the Estate of J. P. Morgan. . . . I do not want to have another experience like I had with the porcelains, and have Uncle Henry slip in and select a few of the finest for one of his customers." Duveen strenuously assured

Frick that he had been given first choice. Of course, the dealer was infamous for playing his clients off one another, but it turns out that Frick did procure the prize enamels from Morgan's collection. In Duveen's sale records, Frick's enamel purchase was the first and by far the largest, both in number of enamels and the value of the pieces. Frick bought forty enamels totaling \$1,157,500—an extraordinary sum, nearly as much as the cost of the panels and furnishings of the Fragonard Room, assembled that same year.

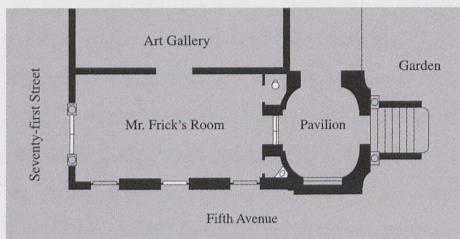
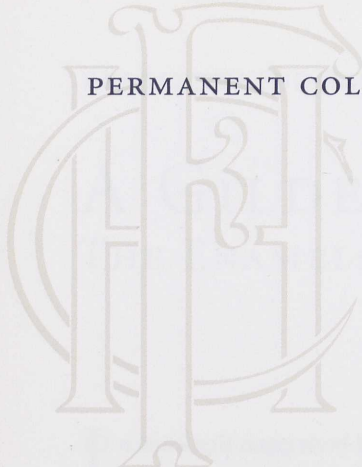
Documents reveal that Frick was no simple "checkbook collector" in this affair. Frick's correspondence details the astonishing array of objects he was offered; those pieces he considered buying were brought to the house on approval, where the selection was further winnowed. Duveen's sale records provide an interesting example of Frick's selectivity;

Frick bought a subset of the rich, jewel-colored pieces from Morgan's collection, leaving behind all of the two-toned grisaille enamels. Many of these grisailles were later acquired by Walters and Hearst and are now in the Walters Art Museum in Baltimore and the Los Angeles



Martial Reymond, *Apollo and the Muses*, late sixteenth century, enamel dish

PERMANENT COLLECTION



ALFRED COOK

County Museum of Art. Future research on these and other collectors may reveal more about the appreciation of Limoges enamels at this time. Whether Frick's choices reflected his personal taste is not clear; Duveen's letter to Mrs. Frick raises the intriguing possibility that she played a role in choosing decorative arts, and it is also possible that the Fricks' daughter Helen or another adviser was involved.

From the time the enamels were brought to the Frick house on approval in May 1916, they have been displayed in the same small room at the far end of the West Gallery, now called the Enamels Room. Originally, this intimate, paneled gallery served as a private office for Henry Clay Frick. On early plans, it is alternatively designated "Mr. Frick's Room" (see plan above) or his office. Frick wrote some of his correspondence there, as we know from a letter of November

1914, composed shortly after he moved into the house; Frick complained to Charles Allom, the noted London interior designer who did most of the ground-floor interiors, that many building details remained unfinished, including some in the room from which he was writing, "the office in the rear of the art gallery."

The opportunity to design this space for Mr. Frick had engendered some rivalry. The celebrated decorator Elsie de Wolfe, who designed most of the family quarters upstairs, lobbied Frick to let her handle some of the first floor as well—including his office. In a postscript to one of her chatty notes, she implored, "Oh, how I wish things could work round so that I could do your room at the end of the gallery. I've such a wonderful scheme for this room. Alas, alas!" There is no trace of what her scheme might have been, and the responsibility was given to Allom. The concept for the interior actually came from architect Thomas Hastings, who proposed to Allom that "It might be well to get old panels. . . . We would suggest decorating the frieze and ceiling in polychrome similar to that in Knole Park, Kent." Allom, who deplored "aggressive ornamentation" in the house, vetoed the colorful ceiling



RICHARD DI LIBERTO

and frieze. Documents reveal that he made simplifications to the ornament in several rooms in order to focus attention on the collection, perhaps at Frick's instigation.

The result of this collaboration between architect, designer, and patron was a room much as we see it today, with a monochromatic decorative plaster ceiling and oak paneling. The silver chandeliers designed by Allom still hang there, and the green velvet draperies and plain green wool carpet, though modern replacements, echo the original fittings. The room originally had French doors overlooking Seventy-first Street, as well as a third window in the center of the Fifth Avenue wall. (These openings, now blinded, are still visible on the building's exterior.) Thus, with its original windows, this now dark room was once flooded with daylight. The paneling on the south wall concealed

CLOCKWISE FROM ABOVE:

Schematic based on Thomas Hastings's 1913 blueprint for 1 East Seventieth Street. This detail of the north-west corner of the ground floor shows "Mr. Frick's Room," which is today the Enamels Room.

Photograph of the Enamels Room c. 1931, looking north, showing the 1917 display cases.

Photograph of present-day Enamels Room, looking north.

two tiny lavatories—one just big enough for a sink, the other for a toilet—flanking double glass doors that led to the garden. Whether Frick entered his office through the garden or the West Gallery, it was a private sanctuary, at the end of a long ambulatory.

Although this room originally served as Frick's office, Allom referred to it as the "Small Gallery" as early as March 1913. Interestingly, at this time Frick didn't own any appropriately scaled paintings or objects to fill the room, but perhaps the intent was to collect them. Renaissance princes often had a tiny room in the most private part of their palaces, where they retreated for quiet study and kept precious objects that they showed to select guests. (The intarsiated *studiolo* from the Ducal Palace in Gubbio in The Metropolitan Museum of Art is one such example.) Perhaps Frick's architects originally envisioned such a princely retreat, updated to combine a private office and gallery for a wealthy industrialist collector.

The acquisition of the Limoges enamels and bronzes in May 1916 evidently prompted Frick to convert this room into a full-fledged exhibition space. He moved his office into a reception room at the other end of the West Gallery (on the site of the present-day Oval Room); by late May 1916, Frick referred to his office and the "Limoges Room" as two separate places. Around this time, he was talking to Hastings about designs for a new sculpture gallery to be added



to the house on an adjacent site on Seventy-first Street. Though this plan never advanced beyond the design stage, it is possible that the conversion of Frick's office into a gallery was part of a grand plan to convert the north end of the house into galleries that could be opened to the public through the Seventy-first Street entrance, which had been used to admit select visitors during Frick's lifetime.

In March 1917 the "Limoges Room" was remodeled to display the enamels. The French doors on the north wall were removed, and carved-oak, mirrored cases were built into the north and west walls to house them. The French Renaissance furniture shown in the 1931 photo on page 8 was probably added at that time. The room was altered again in 1935 during the conversion of the house into a museum. The lavatories and the doors to the garden portico were removed, and the central window on the west wall was closed, probably to provide additional display space for the growing collection of Italian Renaissance paintings. Architect John Russell Pope designed bronze-framed vitrines, which remain in place today.

The room's 2003 refurbishment included the first major reinstallation of the enamels in several decades. The interiors of Pope's cases were redesigned to provide increased flexibility when displaying small-scale objects, and fiber-optic lighting was added, as were temperature and humidity barriers. A series of future installations will focus on



ABOVE:  
Jean de Court (Master I. C.), *The Adoration of the Shepherds*, c. 1555–85, enamel plaque

BELOW:  
Workshop of Pierre or Jean Reymond, *The Gathering of Manna; The Destruction of Pharaoh's Host*, late sixteenth century, enamel ewer

different aspects of The Frick Collection's rich holdings of Renaissance decorative arts; currently, a selection of Limoges enamels is shown together with bronzes, St. Porchaire pottery, and clocks. The sparser installation encourages viewers to focus on individual pieces and see them on a par with paintings, as Renaissance patrons would have perceived them. The juxtaposition of different media recalls the collections in a princely *studiolo* or the Rothschild homes. Although some questions remain about Frick's intentions for the enamels and this room, by considering the relation between these objects and the building that houses them, we can better understand the unique synthesis that makes The Frick Collection so special.—Yvonne Elet, Andrew W. Mellon Curatorial Fellow

# RAPHAEL'S *FORNARINA*

## ON LOAN FROM THE PALAZZO BARBERINI IN ROME

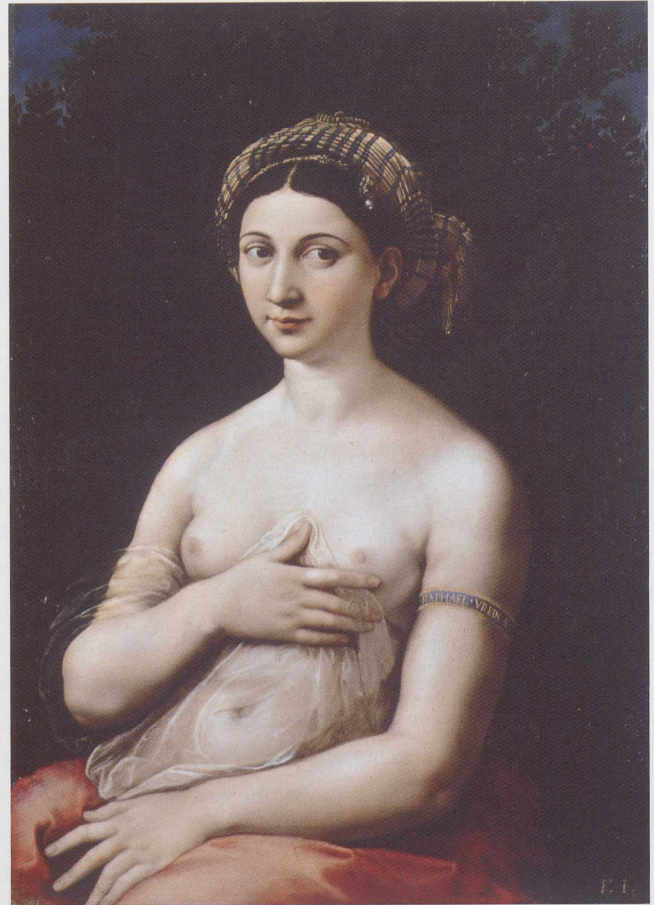
Sumptuous and enigmatic, Raphael's *Fornarina* stands out among the painter's works for its virtuoso depiction of a nude sitter and the diaphanous material she holds. The Frick Collection is pleased to announce that the celebrated painting, which comes to New York from the National Gallery of Art at the Palazzo Barberini in Rome and has never before been exhibited in the United States, will be on display in the Oval Room from December 2 through January 30, 2005.

Painted around 1520 by Raphael—an artist renowned for his mastery of female beauty—*La Fornarina* is at once an idealized likeness of the unknown woman and an ode to her goddess-like grace. The portrait's three-quarter-length format is typical of Renaissance portraiture, while the placement of the sitter's arms recalls the *Venus pudica* (modest Venus) seen in classical sculpture. This pose draws attention to the parts of her body she ostensibly attempts to conceal, intimating both innocence and seduction.

The ribbon tied around *La Fornarina*'s left arm prominently displays the name "Raphael of Urbino," marking both the work of art and the woman as possessions of the artist. This proprietary signature coupled with the painting's extraordinary sensuousness led to the long-held belief that the model had been Raphael's lover and muse. She was traditionally identified as Margherita Luti, the daughter of Francesco Senese, a baker (*fornaio*) from Siena, though this conjecture is far from certain. But the unknown "little baker girl" and her mythic romance with Raphael hold a special place in the history of art; she has inspired

interpretations and variations by artists from Raphael's contemporaries to Picasso. The ambiguity of expression that underscores *La Fornarina*'s charm also has provoked comparisons to Leonardo da Vinci's *Mona Lisa*.

If certain sources about Raphael and his beautiful mistress are to be believed, his obsession with her may have led both to the genesis of this work and to the artist's untimely demise at the age of thirty-seven. (Recent conservation studies, in fact, reveal that the painting was left unfinished at the time of his death.) In 1550 Giorgio Vasari wrote in his famous *Lives of the Artists* that "Raphael could not give his mind to his work because of his infatuation for his mistress," further claiming that the artist's sexual exploits caused the fever that killed him. Vasari's account attests to the power beautiful women had over Raphael, a power undeniably expressed in his portrayal of *La Fornarina*. Though her name and the details of her relationship with the artist will never be known, Raphael's brilliant communication of her irresistible allure ensures that the woman herself will never be forgotten.—Holly Flora, Andrew W. Mellon Curatorial Fellow



*The presentation of La Fornarina at The Frick Collection is made possible, in part, through the generosity of Hester Diamond, with additional support from the Fellows of The Frick Collection. The loan will be accompanied by an illustrated booklet by Dr. Claudio Strinati, Superintendent of the National Museums of Rome. Following its presentation at the Frick, the work will travel to the Museum of Fine Arts, Houston, and the Indianapolis Museum of Art.*

Raphael Sanzio (1483–1520), *La Fornarina*, c. 1520, National Gallery of Art, Palazzo Barberini, Rome

# FRICK AWARDS PRIZE

## TO STUDENT ESSAYIST FOR EXCELLENCE IN WRITING

In collaboration with ten public high schools throughout the five boroughs, the Education Department inaugurated a writing program emphasizing the connection between the visual arts and literacy, which culminated in an essay contest held last spring. The Collection awarded a five-hundred-dollar prize to junior Qian Qian Zhao, an English-as-a-second-language student at Seward Park High School on the Lower East Side. Originally from China, Zhao was inspired by Turner's *Harbor of Dieppe* to write about the experience of leaving her parents three years ago to come to the United States.

The Frick Collection is grateful to the Michael Tuch Foundation for generously funding this program.—*Meredith Watson, Education Liaison*

### *The Harbor of Dieppe*

Day after day, time passes, time changes everything in the world, and the only thing left is the emotion between family and friends. The sun has almost set. I'm going to live far away from my hometown, going to study abroad to create my own future. It's the first time I will leave my family so my mood is very excited, my heart is a contradiction.

On the pier, people stand to give a send-off to their relatives and friends. The surface of the water is peaceful and quiet, but the sounds of the people are heard very loudly. They are talking, crying, and

yelling. For one reason: they won't let the person who needs to leave go.

I will never forget this dusk; it is a turning point in my life, and I can't control my emotions to remain calm. All the people who are leaving have different situations, different backgrounds. Maybe some of them are moving to another city to make a better life. Others are going off to war. Maybe they will come back in a short time, or maybe they won't come back at all.

Those who come to see their relatives off all worry about their safety, urging them again and again to take care. The time passes quickly. Everyone wants to hold on to this time, a beautiful dusk, but we feel sick at heart. I wish the earth could stop its rotation, the sun could stop setting, stay for a while, let us speak something more, even though we have nothing important to say.

It's time to leave. I say goodbye to my parents, try to make them feel at ease. I promise them I will be back as soon as possible; I promise myself I will make the glory to return home to repay my parents' sacrifice. Let this dusk be full of delight, not regret.—*Qian Qian Zhao*

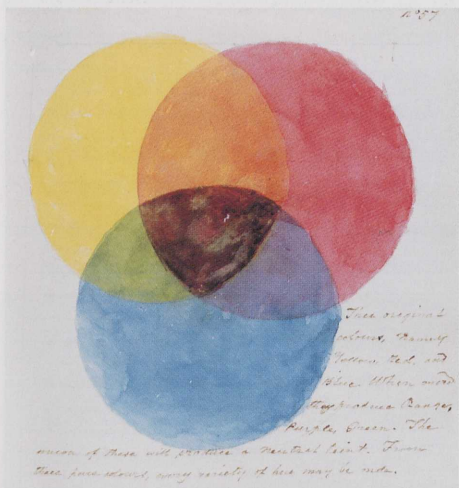


J. M. W. Turner, *The Harbor of Dieppe*, 1826, oil on canvas, The Frick Collection. The painting inspired the winning entry (*above*) in the Education Department's first essay contest.

# ARTIST SKETCHBOOKS AND FACSIMILES PROVIDE GLIMPSE INTO ARTISTIC PROCESS

Although twenty-first-century librarians routinely rely on electronic resources, most would confess to retaining a fondness for the book. In particular, there is little that matches the thrill of holding in one's hand an artist's sketchbook. Such volumes are usually small (for portability) and show the artist's mind in an unvarnished (literally) state. The Frick Art Reference Library is fortunate to have a small collection of original notebooks and sketchbooks, a somewhat larger collection of facsimile sketchbooks, and a trove of publications that celebrate the genre.

Sketchbooks are where works of art are born. They contain preliminary studies that may or may not result in finished paintings,



ABOVE:

This watercolor color chart by Thomas Sully (1783–1872) is from a journal in longhand held by the Library, along with original pen sketches by the artist of John Quincy Adams and the Marquis de Lafayette.

TOP RIGHT:

The Library's facsimile of Pablo Picasso's *Carnet de Paris* from 1900 is filled with rapid sketches of figures he encountered during his first visit to the City of Light.

and, for scholars, they play a crucial role in illuminating the artist's working methods. They also can help resolve questions of attribution or authenticity.

Among the Library's collection of original sketchbooks are those by nineteenth- and early twentieth-century painters John Appleton Brown, William E. Clarke, Leon Dabo, Joseph Knowles, and Moses B. Russell. Joseph Knowles of Boston was infamous in his day for plunging naked into the Maine woods intent on surviving by his wits alone, but the two sketchbooks the Library holds show him to be an acute observer and faithful recorder of American flora and fauna. Brown was on firmest ground with alpine landscapes, and Russell was a talented portraitist. One hopes that Clarke was a better organist (his day job) than draftsman, while Dabo's city and country landscapes are richly atmospheric. In each case, one comes away from the sketchbook feeling a close connection with the artist.

To complement the original material in its collection, the Library has a variety of facsimile editions of sketchbooks. In most cases, publishers go to great lengths to match their facsimile to the original, as evidenced by the facsimile notebooks of Spanish artist José



Gutiérrez Solana, whose *Cuadernos de Paris* of 1937–38 were faithfully recreated down to the spiral wire binding and newspaper clippings that the artist pasted in to document the events and sights of Paris. The Frick holds facsimiles of the sketchbooks of some thirty artists, including Cézanne, Gauguin, and Picasso. Picasso's *Carnet de Paris* is a small (2½ x 4¼ inches) volume covered in red leather that dates from

the painter's first trip to Paris, which he made in 1900 with fellow painter Carles Casagemas. It shows him working in a Nabi-like vein using pencil, pastel, and watercolor. The Library also owns a facsimile of a Picasso sketchbook of 1907 that contains studies for his landmark *Demaiselles d'Avignon* and shows him on the brink of Cubism.

Illustrated notebooks and correspondence offer a particularly rich resource for fleshing out the biographical portrait of the artist. Among the Library's holdings are facsimile volumes of Édouard Manet's *Lettres illustrées*, which provide an excellent example of the spontaneity and generosity with which the artist shared his talent with family and friends through notes personalized by portraits, flower bouquets, or, on Bastille Day 1880, by watercolor sketches of two crossed French flags.

Aside from original sketchbooks and facsimiles, the Library contains a growing collection of books and exhibition catalogues that document artists' preliminary studies. Many focus on the work of amateurs or professional artists who are less well known.

A 2004 publication in the Library's collection, for instance, documents the sketches

of Lutheran minister and traveler Jan Brandes (1743–1808), a man who wasn't a professional artist but rather an astute observer of events and scenes in colonial Indonesia, Sri Lanka, and southern Africa.

Recently the Library purchased on microform a selection of fifteenth- through twentieth-century sketchbooks from the collection of the British Museum, including the works of Blake, Constable, Dürer, Van Dyck, Fragonard, Gainsborough, Moore, Romney, Rubens, Turner, and Whistler, as well as many lesser-known artists. The Frick is one of only four American

libraries that own this set of film and is the sole New York-area repository.

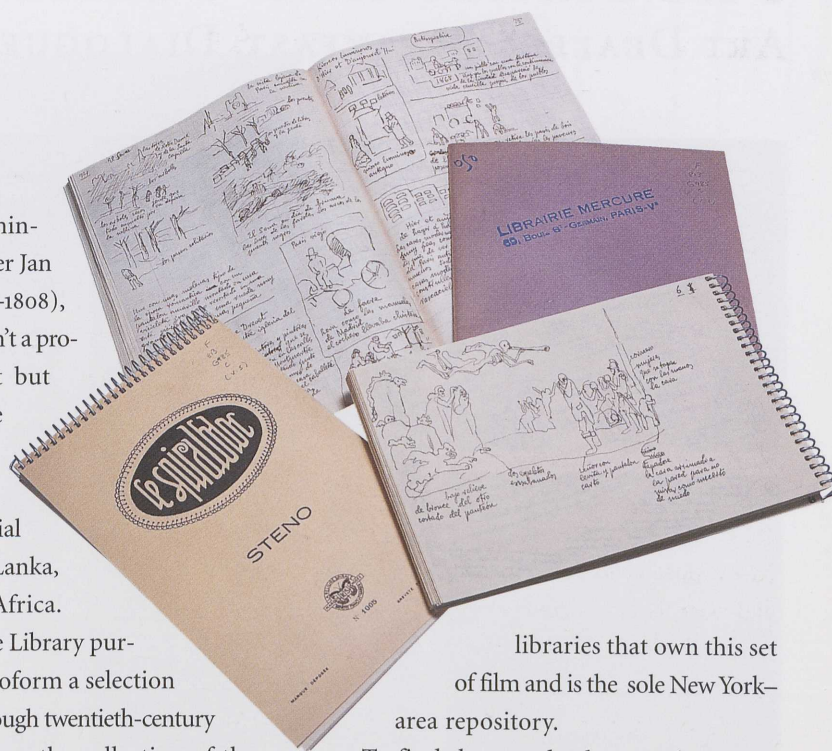
To find these and other similar materials, researchers can consult FRESCO, the Frick Art Reference Library's online catalog, by keyword using the terms "notebooks" or "sketchbooks."—Mark Francis Bresnan, *Head, Bibliographic Records*

## TOP:

This collection of facsimile sketchbooks are exact copies of the originals, down to the spiral binding, inserted newspaper clippings, and, in some cases, the ink that bleeds through the paper onto an adjoining page.

## RIGHT:

The French marine painter Marin-Marie (1901–1987) lived on the Chausey Islands off the Normandy coast and claimed two solo crossings of the Atlantic. He was interested in "à tout ce qui flotte," and his energetic pencil drawings such as the one illustrated at right from a 2002 facsimile are annotated with ships' names and notes regarding colors.



# PROGRAMS AND MEMBER EVENTS: ART DEALERS BREAKFAST, DIALOGUES ON ART, SPRING PARTY

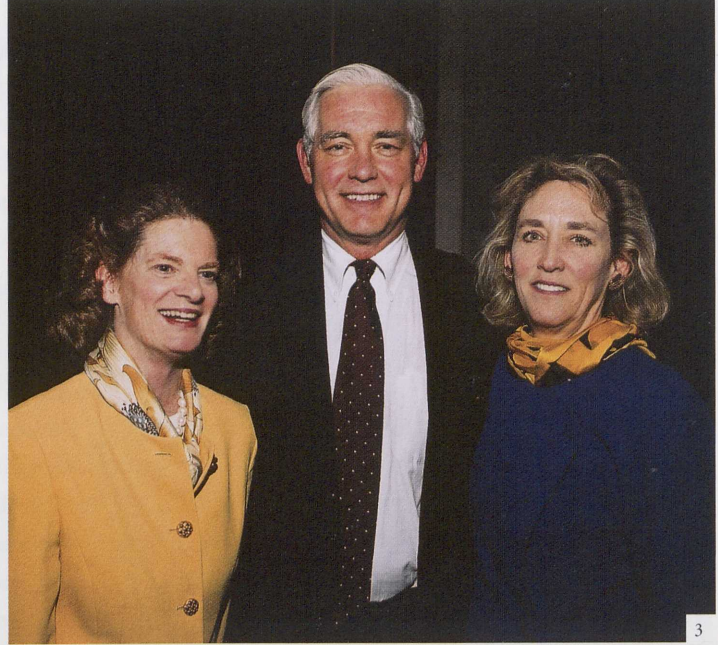
ALL PHOTOGRAPHS BY CHRISTINE A. BUTLER



1



2



3



4



5



6

The Frick Collection is pleased to offer its members and the art community a wide range of educational and social activities throughout the year. This past spring, the Library hosted three events: an open house to celebrate a decade of accomplishments in programming and special projects; the ninth annual Art Dealers Breakfast, held during the International Fine Arts Fair; and the fifth annual Dialogues on Art, a panel discussion

co-hosted with Knoedler & Company. This year's panel, moderated by Peter Sutton, director of the Bruce Museum of Arts and Science, discussed the role that auctions have played in the history of collecting and how auction houses have adapted to the changing demands of a global art economy.

On May 10, Fellows and their friends gathered to enjoy an evening of champagne, dessert, and dancing at the annual Spring

Party. Peter Duchin and his orchestra entertained more than five hundred guests, as did a jazz trio that played on the portico of the Fifth Avenue Garden. In the Director's Dining Room, partygoers lined up to have instant "vintage" photographs taken to commemorate the night's festivities.

For information about attending the upcoming Autumn Dinner this October 18, please call Sarah Milestone at (212) 547-6873.





7



8



9



10



11



12



13



14



15



16



17

1. Philip Isles and Emily T. Frick; Spring Party 2. Christine Scornavacca and Martha Loring; Spring Party 3. Helen Clay Chace and Peter and Bug Sutton; Dialogues on Art Reception  
 4. Mary Ellen Oldenburg, John Torson, and Joan Washburn; Dialogues on Art Reception 5. Robert Lindgren, Lisa and Philip Gorrivan, Victoria Lindgren, and Louise Schliemann; Spring  
 Party 6. Patricia Barnett, Helen Clay Chace, and Elizabeth and Patrick Gerschel; Library Open House 7. Deirdre Stam, Patricia Barnett, and David Stam; Spring Party 8. Edgar Munhall  
 and Charles Ryskamp; Library Open House 9. Jack and Cynthia Reese; Spring Party 10. Dick McIntosh, Tamara Glenn, Susan Galassi, and Michael Thomas; Dialogues on Art Reception  
 and Charles Ryskamp; Library Open House 11. Alan Salz, François Lorenceau, Frances Beatty, Inge Reist, and Per Jensen; Art Dealers Breakfast 12. Anne and François Poulet; Spring Party 13. Stanley and Elizabeth Scott; Spring Party  
 14. Mimi Stafford, Jere Patterson, June Dyson, and William Davis; Spring Party 15. Natalie Brengle, J. Fife Symington, Jr., and Helen Clay Chace; Spring Party 16. Mary Lou and Nicholas  
 Hall; Spring Party 17. Shawn Stevens, William Barnabus McHenry, Tom Gold, Alan Wintermute, and Bannon McHenry; Spring Party



# THE FRICK COLLECTION 2003 ANNUAL REPORT

REPORT OF THE PRESIDENT OF THE BOARD OF TRUSTEES 18

REPORT OF THE CHIEF CURATOR 20

REPORT OF THE ANDREW W. MELLON LIBRARIAN 22

THE FRICK COLLECTION SALUTES FORMER DIRECTOR SAMUEL SACHS II 24

NOTABLE 2003 LIBRARY ACQUISITIONS 26

GIFTS AND GRANTS 27

FELLOWS AND FRIENDS OF THE FRICK COLLECTION 28

ANNUAL FUND DONORS 33

CORPORATE MEMBERS 34

AUTUMN DINNER 34

FINANCIAL STATEMENTS 36

STAFF 38



# REPORT OF THE PRESIDENT OF THE BOARD OF TRUSTEES

HELEN CLAY CHACE

CHRISTINE A. BUTLER



and appreciation for this institution's accomplishments during his tenure. On page 24 of this report you can read in greater detail about all that took place under his leadership.

In October 2003 we welcomed Anne Litle Poulet as our seventh Director and the first woman to hold this position; she joins a small sisterhood that heads major museums across this country. Anne comes to us after a distinguished career at the Museum of Fine Arts, Boston, where, for two decades, she was curator of the department of European decorative arts and sculpture, of which she is currently curator emerita. Her breadth of experience, her renowned scholarship and connoisseurship, and her enormous reservoir of enthusiasm are coalescing into a clear vision, which, in concert with the Trustees, will judiciously guide this institution through its continuing and promising evolution. Under Anne's inspired leadership, there is an ever-brightening future for the Frick.

Each Director brings his or her own experiences and perspective to the Collection, and such transitional moments help us to see the institution in a new light, enriching our understanding of its enormous strengths as well as increasing the range of opportunities to build on the achievements of the past. We are on the threshold of such a time. With the close of 2003, we look back on our accomplishments with great satisfaction and pride and eagerly look forward to what lies ahead.

There was much to celebrate in 2003, owing in large part to the dedication and talent of our staff, all of whom are commit-

I am pleased to report to The Frick Collection's donors, members, visitors, and all of our colleagues about the progress we made during a very active 2003. Along with its challenges, it was a period of renewed vitality for us, for the city, and for the country's cultural community as a whole. We all have come to live with a higher level of anxiety in these troubled times, but many also have turned to institutions such as ours, where the historic and aesthetic experience provides a sense of the enduring cultural values we hold so dear. Places like The Frick Collection are more treasured than ever, for all the extraordinary reasons that are recounted for you in the pages that follow.

The past year was one of transition. In September we said good-bye to our outgoing Director, Samuel Sachs II, with gratitude

ted, as are the Board of Trustees and I, to preserving the Frick's high standards. Our special exhibitions program remained as popular as ever with both the critical press and the public, achieving record-breaking attendance at four major shows in 2003, which you can read more about in the report of Chief Curator Colin B. Bailey, on page 20. We are especially proud of *Whistler, Women, and Fashion*, spearheaded by Curator Susan Grace Galassi and shown exclusively at the Frick. This and our other special exhibitions, which so brilliantly complement our permanent holdings, not only further scholarship but provide visitors a compelling reason to return to the Frick again and again.

In 2003 we were pleased to receive a magnificent pair of seventeenth-century bronzes by Giovanni Francesco Susini, the generous gift of Walter A. and Vera Eberstadt. *Lion Attacking a Horse* and *Leopard Attacking a Bull* are extremely rare and are the only pendants belonging to an American public collection that pair a lion and a horse and a leopard and a bull. We are extremely grateful to the Eberstadts for this extraordinary gift.

The Frick Art Reference Library continued its remarkable work in 2003, ensuring its place as one of the most well-respected international art research centers. In the report of the Andrew W. Mellon Librarian, on page 22, Patricia Barnett details just a few of the Library's most outstanding programs and services during the past year.

Restoration work continues on our beautiful building, the demands on which increase as the house passes its ninetieth

anniversary. After nearly two years' work, the sidewalk bordering Seventieth Street and Fifth Avenue was restored with elegant bluestone, and the steps to the main entrance were redone. This restoration, along with work completed in 2002 on the garden architecture and the wrought-iron fence surrounding the Collection, received an award of distinction from the New York Landmarks Conservancy. These improvements were made possible with the generous support of our contributors through their gifts to our Annual Fund and by their patronage at our fundraising events such as the Autumn Dinner, which in 2003 celebrated the Honorable Schuyler G. Chapin for his many contributions to the cultural life of New York City and raised nearly \$300,000. In February, our Young Fellows Steering Committee again orchestrated a successful Winter Ball, raising more than \$200,000 for our education program. We are grateful to Christian Dior, the event's sponsor, for its part in making the evening the enormous success that it was. Our Annual Fund, now in its third year, raised nearly \$100,000—an increase of more than 50 percent. Our corporate sponsors continue to be an important source of support.

The many accomplishments of 2003 were tempered with some difficult realities. Our financial picture was the most challenging in the institution's history, as we struggled to emerge from a sluggish economy, an unfavorable fundraising environment, and a bear market that had eroded our endowment funds in the previous two years. While some of these circumstances were anticipated at the outset of the year,

some exceeded our expectations. Though virtually the only loss in our almost seventy-year history, we closed the books on 2003 with an operating deficit of \$869,000.

How do we move forward? We have streamlined our operations in every conceivable way, and over the past few years our staff members have been asked to do more with less. The Board of Trustees is enormously proud of and grateful to a truly gifted and dedicated staff for finding creative ways to meet this challenge and recognizes that any further expense cuts will only erode the programs that are at the heart of our mission.

To pursue the vision of the Collection and the Library and to fulfill the potential we recognize in each of our activities, we must now deepen our personal commitments, engage an ever-widening audience in our plans and in our success, and continue to raise and meet our fundraising goals. The Director and the Board of Trustees are committed to securing the needed support, and I ask you, our devoted members, to join us in this endeavor.

On behalf of the Board of Trustees, I would like to offer my deepest thanks for your generosity this past year and look forward to working with you in the future to ensure the health and vitality of The Frick Collection.

Thank you.

*Helen Clay Chase*



# REPORT OF THE CHIEF CURATOR

COLIN B. BAILEY

*An institution which shall encourage and develop the study of the fine arts and . . . promote the general knowledge of kindred subjects among the public at large.*

The way in which Henry Clay Frick described the mission of the museum that was to bear his name—written in the will he drew up in June 1915, four years before his death—remains a remarkably succinct and accurate definition of the Collection's curatorial activities today.

The permanent collection is the primary responsibility of the department, and its care and presentation remain our highest priority. During 2003, we completely refurbished the Enamels Room, including the interiors of the cases designed in the early 1930s by John Russell Pope. Directable, low-temperature fiber-optic lighting was installed; small bronzes and other precious objects from the Collection were integrated with the Limoges caskets, ewers, dishes, and devotional panels in an installation that now evokes the mystery and wonder of a late Renaissance *Kunstkammer*.

In March we were delighted to receive Walter A. and Vera Eberstadt's gift of a magnificent pair of bronzes by the seventeenth-century Italian sculptor Giovanni Francesco Susini (1585–c. 1653). *Lion Attacking a Horse* and *Leopard Attacking a Bull*, executed around 1630–40, display both the energy and technical refinement that are characteristic of works made by the artists who trained under the Florentine sculptor Giambologna at the end of the sixteenth century. Susini's bronzes were installed in the Living Hall on a pair of late seventeenth-century marquetry pedestals from the workshop of André-Charles Boulle.

Also in March, the Collection published the ninth volume of its comprehensive catalogue, which is devoted primarily to drawings and prints but includes as well paintings acquired since the publication of the first volumes of the series in 1968. *The Frick Collection: Drawings, Prints & Later Acquisitions* was a collaborative effort, many years in the making, with contributions by several scholars, a foreword by Samuel Sachs II, and a preface by Charles Ryskamp.

Two paintings from the permanent collection were conserved in 2003. Jean-Baptiste Greuze's *Wool Winder* of 1759, which had been on loan to the J. Paul Getty Museum for the exhibition *Greuze the Painter*, remained in Los Angeles for several months to undergo treatment at the Getty's conservation studio. There, Getty conservator Mark Leonard removed heavy layers of surface dirt that had accumulated on the canvas, corrected the discolored retouches of an earlier restoration, and reconstructed the broken and abraded glazes in much of the background. The result is a subtle transformation and enhanced luminosity in one of Greuze's most engaging images. François Boucher's *Presumed Portrait of Madame Boucher* of 1743 was revarnished by Hubert von Sonnenburg, Head of Paintings Conservation at The Metropolitan Museum of Art, rendering its surface once again pellucid and enabling its bright colors to be read with much greater clarity.

Temporary exhibitions—scholarly and focused in nature and moderate in size—have become an increasingly important part of the curatorial program, and in 2003 the department mounted no fewer than five exhibitions featuring paintings, drawings, bronzes, and

even costumes. *Anne Vallayer-Coster: Painter to the Court of Marie-Antoinette* concluded its American tour when it opened at the Frick in late January, following presentations at the National Gallery of Art in Washington, D.C., and the Dallas Museum of Art. This monographic exhibition devoted to the accomplished painter of still lifes who was one of the few female members of the Académie royale was accompanied by a handsome catalogue published by Yale University Press, to which I contributed an essay on the patrons of Vallayer-Coster.

Marking the centennial of James McNeill Whistler's death and conceived as a way of contextualizing the three great full-length portraits of women in the Collection, *Whistler, Women, and Fashion* was the Frick's major exhibition for 2003. Running April 22 through July 13, the show was jointly organized by Frick Curator Susan Grace Galassi and Margaret F. MacDonald, Principal Research Fellow of the Centre for Whistler Studies in Glasgow. Some eighty-seven works, shown exclusively at the Frick, included portraits in oil and pastel, prints and drawings, as well as period dresses and fashion plates. A major monograph, also published by Yale, accompanied the exhibition, as did an all-day conference, *Dress and Art*, which brought together specialists from America, Europe, and Japan.

To help celebrate the publication of *Drawings, Prints & Later Acquisitions*, a selection of twelve works on paper from the permanent collection by artists from Pisanello to Whistler was on view in the Cabinet April 29 through June 1.

In partnership with the Rijksmuseum, Amsterdam, The Frick Collection served as the

#### The Curatorial Department of The Frick Collection

*Standing:* Elaine Koss, Editor; Diane Farynyk, Registrar and Exhibition Manager; and Denise Allen, Associate Curator. *Seated:* Amy Herman, Head of Education; Barbara Roberts, Conservator; Colin B. Bailey, Chief Curator; and Susan Grace Galassi, Curator

single American venue for the monographic exhibition devoted to the bronzes of the Delft-born sculptor Willem van Tetrode (c. 1525–1580), who is documented as Cellini's assistant in Florence by mid-century. The exhibition, which ran from June 24 through September 7, featured thirty-eight bronze statuettes along with related prints by Goltzius. Referring to Tetrode's sculptures as "compact masterpieces," Simon Schama noted in *The New Yorker* that "At a time when cultural elephantiasis seems to be the norm, it's good to be reminded that high aesthetic voltage can be generated from miniature power packs." In conjunction with the exhibition, a study day was organized at the Collection to address issues of attribution, chronology, and casting.

Finally, in celebration of the three hundredth anniversary of François Boucher's birth, The Frick Collection was the opening venue for an exhibition devoted to his drawings, organized by the American Federation of Arts. Running October 8 through December 14, *The Drawings of François Boucher* presented some seventy-five sheets executed in various media from pastel to *sanguine brûlée*, which charted the long and fecund career of an artist whose cabinet pictures and decorative painting are so well represented in the Collection.

Eleven public lectures were given throughout the year and special mention should be made of two speakers from London. Sir Howard Hodgkin spoke on "Painting and

Ourselves" as part of the Artists, Writers, and Poets Series, and Charles Hope, Director of the Warburg Institute, inaugurated a new series sponsored by the Council of The Frick Collection with a lecture titled "Giorgione or Titian? History of a Controversy." Thanks to the support of the Council, Professor Hope's lecture was published, as will be all subsequent lectures in the series.

I am glad to report that our Education Department saw the number of New York City public school students who visit the Collection increase by almost a third to some 1,738 participants, representing, for the first time, schools from all five boroughs. The nationally acclaimed Art of Observation, a collaboration with the Weill Cornell Medical School, successfully completed its eighth session, and in the spring we joined forces with our colleagues at the Lower East Side Tenement Museum to launch Two Sides of the Gilded Age, a program for eighth-grade public school students that compares and contrasts the architectural, social, and economic aspects of life in a tenement with those in the Frick mansion, one of the city's most opulent residences. In 2003 the Education Department also inaugurated two literacy

programs, the first of which serves seven middle school classes in conjunction with City College's Poetry Outreach Center, while the second offers a prize for excellence in writing to a student from one of four participating high schools.

Lack of space prevents me from expanding on many of these initiatives, but I must mention the arrival of two new staff members who have greatly invigorated the life of the department. Associate Curator Denise Allen, formerly of the J. Paul Getty Museum, was appointed in January 2003; as a specialist in Renaissance painting, sculpture, and the decorative arts, she was invaluable in working with our Mellon Fellow Yvonne Elet in the reinstallation of the Enamels Room, as well as supervising the complex and magisterial display of Tetrode's bronzes. Thanks to the Andrew W. Mellon Foundation, we welcomed Holly Flora, a doctoral candidate at the Institute of Fine Arts, New York University, as our second Mellon Fellow.

It gives me the greatest pleasure to report on these activities, which have been so well received by our members, our colleagues at sister institutions, the critical press, and the public at large. Thank you for your support.





# REPORT OF THE ANDREW W. MELLON LIBRARIAN

PATRICIA BARNETT

Just as Helen Clay Frick sought and enjoyed the support of scholars, collectors, and fellow philanthropists to define the special mission of the Frick Art Reference Library, today's staff looks to an exceptional group of supporters, scholars, and colleagues for intellectual and practical direction. Without this support, the Library's leadership role in the art research community would soon dissipate, for the rapid changes taking place in this field mean that our history as an important international research center, distinguished as it is, cannot alone sustain our reputation. The staff of the Library takes pride in carrying forward the founding mission of Helen Clay Frick and continues to initiate new and valued programs each year as the changing needs and research methods of our patrons drive both our collections and our services.

By now, the members of The Frick Collection are accustomed to reading about the many notable acquisitions the Library makes each year to strengthen its research collections. In 2003 as in past years, our goal was to strike a balance between acquiring important older publications that rarely appear on the market and keeping up with the ever-increasing number of current scholarly publications. Because 2003 saw significant challenges in making ends meet, we were particularly grateful for several grants, notably from Mrs. Charles Wrightsman and from The Helen Clay Frick Foundation, which supplemented our acquisitions budget. I also wish to single out Trustee Melvin R. Seiden for his extraordinary generosity in endowing two new book funds in honor of former

directors Charles Ryskamp and Samuel Sachs II. These and other donations sustained the level of coverage the Library requires, even in the face of a weakening dollar and increased costs of both conventional and online publications. In all, the Library's annual acquisition rate of approximately six thousand books was in keeping with that of past years and brought to our patrons some exceptional items, including rare Eastern European and Russian exhibition catalogues, early twentieth-century catalogues for the Vienna Secession, and nineteenth-century catalogues for auctions held in Paris, Vienna, and London.

In many ways, the Library's Photoarchive and microfiche collections position the institution as unique among New York-area libraries. The Library's reputation for cataloging and caring for these collections has made it the repository of choice for the photoarchives of other institutions, as was demonstrated by substantial gifts of photographs in 2003 from the Art Students League of New York and the Rijksbureau voor Kunsthistorische Documentatie in The Hague. These gifts were supplemented by the acquisition of thousands of photographs of unpublished drawings and recent acquisitions by regional museums of the United States, as well as the microfiche collections from both Sotheby's and Christie's pictorial archives.

The year 2003 marked a watershed for streamlining access to the collections. Owing in large measure to the generosity of the Paul Mellon Estate, our online catalog, FRESKO, now gives access via the Frick

website to all our collections, including the artist files of the Photoarchive and the archives of both The Frick Collection and The Helen Clay Frick Foundation. This not only enables patrons to establish their research plan in advance of a Library visit but also allows researchers at other libraries to identify Frick materials they would like to consult on-site or through interlibrary loan. For its part, the Photoarchive has begun the long and costly process of converting its text and image records from print to digital form: over the next three years, thanks to the support of the Carl and Lily Pforzheimer Foundation and the Andrew W. Mellon Foundation's initiative ARTstor, approximately twenty-five thousand negatives from the Library's collection will be digitized for access worldwide. Much of this work will be done in-house in the newly expanded digital lab, constructed in recognition of the long-term needs of digital conversion. Finding aids to materials held in the Archives increased in number, owing in large part to a two-year grant from the Gladys Krieble Delmas Foundation.

The Conservation Department faced exceptionally challenging issues that took its responsibilities well beyond the routine book, photograph, and film conservation assignments necessary to preserving our valued holdings. A third round of stack reconfiguration gained the Library enough space to accommodate four more years of growth. Nonetheless, space problems at our Library, as at every other comparable institution in the area, have prompted regular meetings with my counterparts at The



#### Department Heads of the Frick Art Reference Library

*Standing:* Lydia Dufour, Chief, Public Services; Floyd Sweeting, Head, Information Systems; and Deborah Kempe, Chief, Collection Management and Access.

*Seated:* Sally Brazil, Chief, Archives and Records Management; Inge Reist, Chief, Collection Development and Research; Patricia Barnett, Andrew W. Mellon Librarian; and Don Swanson, Chief, Collections Preservation



Metropolitan Museum of Art, the Museum of Modern Art, and the Brooklyn Museum of Art to plan how best to meet the needs of our patrons through shared resources and consolidated storage.

Professional groups as well as distinguished scholars from abroad visited the Library in record numbers in 2003. Just as groups such as the Curators of Dutch Art came to consult our vast resources (in this case the Montias database of primary documents relating to patterns of collecting in sixteenth- and seventeenth-century Holland), European librarians and photoarchivists came to learn our methods and policies, so often viewed as models for other institutions. Authors of the Pissarro and Sargent catalogues raisonnés were regularly seen in our Reading Room, as were curators from the Louvre, Museo Vittoriano in Rome, Stedlijke Musea of Gouda, and Rubenshuis, to name only a few. In equal measure, the Library's staff reached out to other institutions by serving on boards; by organizing and attending professional meetings of, for example, the Association of Research Institutes in Art History, the Visual Resources Association, and the Art Libraries Society of North America; and by spearheading consortial activities such as shared cataloging of

images with the Getty Research Institute and the Biblioteca Hertziana in Rome.

Our research program, together with the scholarly initiatives of the Curatorial Department, is representative of what makes The Frick Collection and Library unique. The staffs of many departments are involved in the exhibitions, panel discussions, professional gatherings, and student orientations that constitute the program, all of which give form to an active approach to research, guaranteeing that patrons of the Library are aware of the ways our materials meet their diverse needs and ensuring that the next generation of scholars will be conversant in the methodology of object-focused research and the study of the history of collecting.

Our 2003 exhibition, *The Twentieth-Century Art Scene Documented at the Frick Art Reference Library*, promoted greater awareness of the breadth and depth of the Library's coverage of a period of art history not normally associated with the Frick. Jackson Pollock's exhibitions of the 1940s, the Pierre Matisse Gallery's stable of artists, and announcements for Leo Castelli's new gallery of modern art were among the items displayed and documented in a handsome

pamphlet produced by members of the staff.

The annual Dialogues on Art panel discussion, a benefit event for the Library, addressed "Special Exhibitions: Politics and Planning." Moderated by John Walsh, Director Emeritus of the J. Paul Getty Museum, the panel consisted of curators and administrators from The Metropolitan Museum of Art, the St. Louis Art Museum, and the American Federation of Arts, as well as *Newsweek* critic Peter Plagens. Two additional benefits, sponsored by Dover Street Gallery and Didier Aaron, Inc., were well attended by scholars and collectors alike.

Many of our activities during 2003 were spurred by initiatives explored at the first Trustee and Council Library Committee meeting, which took place in late 2002. We concluded 2003 with a second meeting filled with energy and ideas that will take us well beyond 2004. With both the intellectual and material support that is forthcoming from our Director, Trustees, Council, and you, our members, we look ahead to exciting days that by no means reflect the views of those skeptics who might question the role of libraries in the twenty-first century.

# THE FRICK COLLECTION SALUTES FORMER DIRECTOR

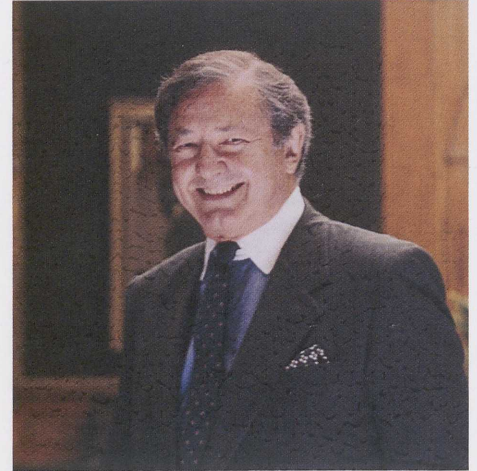
## SAMUEL SACHS II

Samuel Sachs II, who ended his tenure as Director on September 30, 2003, has been elected Director Emeritus of The Frick Collection. Sachs made numerous contributions to the Collection during the six years he held the position. Under his leadership, the exhibition program dramatically expanded, continuing to offer visitors the smaller “focus exhibitions” for which the Frick has become known, such as those highlighting works by Velázquez, El Greco, Whistler, and Manet, as well as more comprehensive shows such as *The Medieval Housebook*, *Watteau and His World*, and *Greuze the Draftsman*. In addition, Sachs played a key role in bringing to the Frick *Willem van Tetrode (c. 1525–1580): Bronze Sculptures of the Renaissance*, which ran concurrently with The Metropolitan Museum of Art’s exhibition of works by

Hendrick Goltzius, on whom Tetrode had an enormous influence.

Of equal value to our visitors were many physical improvements. The reconfiguration of the Entrance Hall made it more welcoming and enabled the implementation of an Acoustiguide tour of the Collection, which was introduced in 1998. Its printed counterpart followed soon after and, in recognition of the fact that a high percentage of our visitors come from well beyond the metropolitan area, both are available in six languages. The Fifth Avenue Garden walls and wrought-iron fences underwent complete restoration, and a new bluestone sidewalk was installed. The Director’s Dining Room on the second floor of the Collection was redecorated, providing a congenial site for various special programs for Fellows. The *Members’ Magazine*, which won a design

FERNANDO BENGOCHEA



award from the American Association of Museums shortly after its launch in 2001, was seen by Sachs as key to keeping members aware of their critical role in preserving the health and vitality of the institution. Similarly, the appointment of the first Communications Officer, Heidi Rosenau, developed new audiences.

An award-winning website, [www.frick.org](http://www.frick.org), was launched in 1998 and continued to expand under Sachs’s guidance, both in its content and its usefulness. The website’s virtual tour of the galleries, one of its most popular features, was championed by Sachs. He was also a proponent of creating an online shop as well as offering online memberships to virtual visitors.

During Sachs’s tenure, changes at the Frick Art Reference Library reinforced its stature as a world-class research center. Some \$600,000 was designated for the completion of the electronic conversion of the Library’s holdings, providing access to users beyond New York City. In 2001 the Library saw the arrival of The Helen Clay Frick Foundation Archives, whose care is now shared by the Collection and the University of Pittsburgh. This collaboration will make possible



for the first time access to this enormous trove of archival material from Henry Clay Frick and his descendants, including photographs, architectural and business records, and documentation of works of art they owned.

The involvement and contributions of Frick support groups—ranging from education volunteers to the Council and the Young Fellows Steering Committee—grew markedly during Sachs's tenure, owing in no small part to his belief that support is not only welcome but essential to the Frick, particularly as it makes the transition from a private operating foundation to a public charity that must raise one-third of its annual support from outside sources.

During Sachs's tenure as Director, event-based fundraising broke new ground. In 1998, the Collection inaugurated the Autumn Dinner, which annually raises approximately \$300,000 for the institution. The Young Fellows Winter Ball, also begun under Sachs, has proven year after year to be one of the Frick's most popular events as well as one of its most successful fundraising endeavors. Attended annually by upwards of eight hundred Young Fellows and repeatedly heralded by the *New York Times* as one of the season's best parties, the event in 2003 raised more than \$200,000 for the Frick's education program.

Sachs's commitment to membership development encouraged a 50 percent increase in membership between 1998 and 2003. During that time, the Collection staff saw significant changes. Following the retirement of Edgar Munhall, Colin B. Bailey joined the Collection as Chief Curator in October 2000. In June of that year, Conservator Barbara Roberts came on board, dramatically expanding that department.

In a move to develop the next generation of museum professionals, Sachs saw the reinstatement of the curatorial fellows program, now funded by the Andrew W. Mellon Foundation. In 2002 the Frick welcomed the first of five Mellon Fellows, all of whom will serve a two-year residency with the Curatorial Department.

In 1999, under Sachs's administration, the Frick received a generous endowed bequest of watches and clocks from Winthrop Kellogg Edey, the first large-scale addition to the Collection in more than thirty-five years. Paul Mellon, perhaps the single most important American patron of the arts in the second half of the past century, bequeathed \$1.5 million to the endowment of the Frick Art Reference Library. In 2003 Walter A. and Vera Eberstadt gave the Collection *Lion Attacking a Horse* and *Leopard Attacking a Bull*, a magnificent pair of bronzes by the seventeenth-century sculptor Giovanni Francesco Susini. We are grateful to Sachs for his role in obtaining these and other gifts.

Working with the staff and Board, Sachs

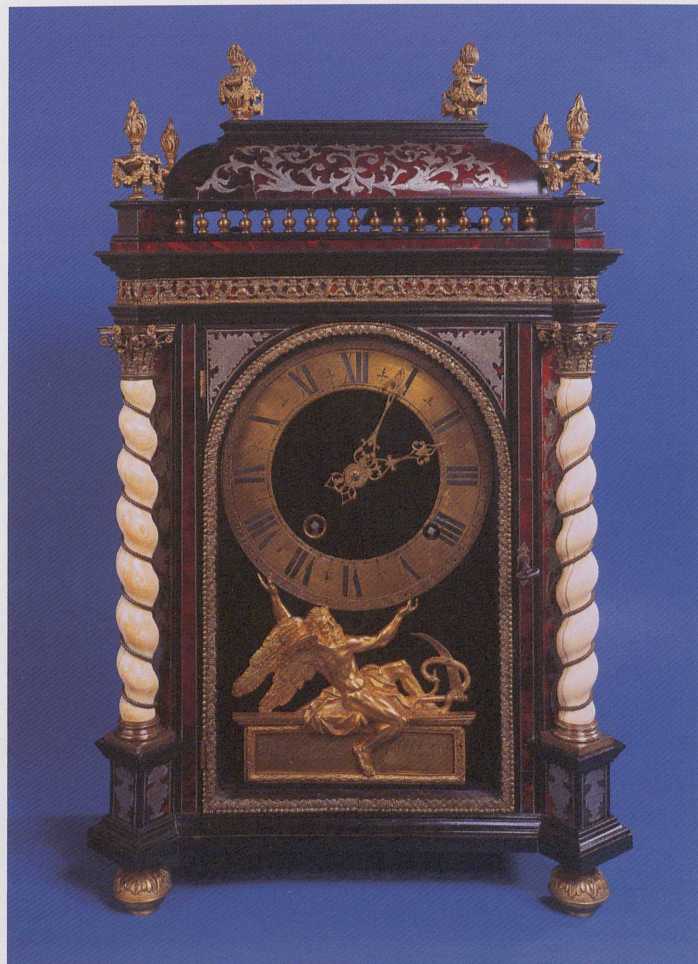
helped to define the institution's priorities and needs in preparation for future transformations. These accomplishments continue to contribute to plans for the evolution of the Collection.

ABOVE:

**Balthazar Martinot II** (1636–1714; clockmaker) and **André Charles Boulle** (1642–1732; attributed casemaker), marquetry-veneered wall clock with ivory-twist pillars, c. 1675; bequest of Winthrop Kellogg Edey

OPPOSITE PAGE:

**Giovanni Francesco Susini** (1585–c. 1653), *Lion Attacking a Horse*, c. 1630–40, bronze; gift of Walter A. and Vera Eberstadt



# NOTABLE 2003 LIBRARY ACQUISITIONS

Below are a few of the most significant acquisitions.

Arte y Documento = *Art and Document*, *Fundación Espigas 1993–2003*, Buenos Aires, 2003; gift of Fundación Espigas through Mauro Herlitzka

*Brâncuși la apogeu: noi perspective: colocviul international*, Bucharest, 2001; gift of the Istitutul de Istoria Artei "G. Oprescu"

Roger Benjamin, *Orientalist Aesthetics: Art, Colonialism, and French North Africa*, Berkeley, 2003; gift of the author

Olivier Berggruen and Max Hollein, eds., *Henri Matisse: Drawing with Scissors, Masterpieces from the Late Years*, Munich, 2002; gift of the author

Heide Grape-Albers, ed., *Das Niedersächsische Landesmuseum Hannover: 150 Jahre Museum in Hannover, 100 Jahre Gebäude am Maschpar: Festschrift zum Jahr des Doppeljubiläums*, Hannover, 2002; gift of the Niedersächsische Landesmuseum Hannover

*Hans Peter Hanson* (album of photographs of the artist's work assembled by the artist); gift of the Art Students League

David Langeois et al., *Quelques chefs-d'oeuvre de la collection Djahanguir Riahi: Ameublement français du XVIIIe siècle*, Milan, 1999; gift of Djahanguir Riahi

Antoine Salomon and Guy Cogeval, *Vuillard: The Inexhaustible Glance: Critical Catalogue of Paintings and Pastels*, 3 vols., Milan and Paris, 2003; gift of Wildenstein & Company

450 catalogues for auction sales of prints; gift of Leslie J. Garfield

336 photographs, primarily of works by Julio González; gift of Professor Josephine Withers, University of Maryland

Laura Alidori, ed., *Bibbie miniate della Biblioteca medica laurenziana di Firenze*, Florence, 2003; purchased through the Homeland Fund

*Catalogue of the Duke of Marlborough's Collection of Limoges Enamels at Blenheim Palace*, June 14, 1883

Auction sale catalogue of the paintings collection of Ignaz Theodor Reichsritter von Pachner Edlen von Eggenstroff (1820; clerk's annotated copy)

Gustave Geffroy, *Auguste Brouet: Catalogue de son oeuvre gravé*, 2 vols., Paris, 1923 (includes original signed prints by Brouet); purchased through the Gerschel Fund in memory of André Meyer

Alden R. Gordon, *The Houses and Collections of the Marquis de Marigny*, Los Angeles, 2003; purchased through the Florence Gould Fund

Wolfgang Henze, *Die Plastik Ernst Ludwig Kirchners: Monographie mit Werkverzeichnis*, Bern, 2002

Christian Lenz, *Deutsche Künstler von Marées bis Slevogt* (Neue Pinakothek, Munich), 3 vols., Munich, 2003; purchased through the generosity of the J. and H. Weldon Foundation

Ulrike Lorenz, *Otto Dix: Das Werkverzeichnis der Zeichnungen und Pastelle*, 8 vols., Weimar, 2003

Rembrandt Peale, *Graphics, The Art of Accurate Delineation: A System of School Exercise for the Education of the Eye and the Training of the Hand, as Auxiliary to Writing, Geography and Drawing*, Philadelphia, 1853

John K. G. Shearman, *Raphael in Early Modern Sources, 1483–1602*, 2 vols., New Haven, 2003; purchased through funds donated by The Helen Clay Frick Foundation

Thirty-five catalogues for exhibitions of Russian art held in Russia, 1912–31; purchased through the generosity of Melvin R. Seiden

Twenty-seven catalogues for exhibitions held at the Kester-Gesellschaft, Hannover, 1930–36

Nine rare Vienna Secession catalogues, early twentieth century; purchased through the Heinemann Fund

Thirty-one Finnish exhibition catalogues, 1894–1934; purchased through the Heinemann Fund

*Sotheby's Pictorial Archive* (microfiche)

994 photographs of paintings in four private collections in Great Britain, by subscription to the Courtauld Institute of Art Photographic Survey

# GIFTS AND GRANTS

We deeply appreciate the generosity of the following individuals, foundations, and corporations who made substantial contributions to the Collection and Library during the course of the past year.

Roughly 40 percent of the Frick's funding for its operations must be found annually from sources other than the endowment.

Capital projects and special programs require additional resources as well. These listings reflect gifts and grants that provide vitally needed general operating funds, as well as support for special exhibitions and publications, Library acquisitions and its endowment, services to scholars, the education program, conservation equipment and materials, land-

scaping, seminars, the Photoarchive, and the annual Symposium on the History of Art. In addition, the demands of our beautiful but aging building require an increasing investment of capital.

We are most grateful to our growing group of supporters for their generous help in funding our programs and services.

## The Founder's Society

Helen Clay Chace  
Mrs. William Stratton Clark  
Stephen Morrow  
Estate of Louise A. Pierot  
Alice Jean Zuccaire

### \$100,000 AND ABOVE

The Helen Clay Frick Foundation  
The Peter Jay Sharp Foundation  
Mr. and Mrs. Howard Phipps, Jr.

### \$50,000-\$99,999

Enid A. Haupt  
Melvin R. Seiden and Janine Luke

### \$25,000-\$49,999

The Chamber Music Society of  
Lincoln Center\*  
Dr. and Mrs. Henry C. Frick II  
The Lita Annenberg Hazen Foundation  
New York Stock Exchange Foundation, Inc.  
The Sunny and Abe Rosenberg Foundation

### \$10,000-\$24,999

Mr. and Mrs. Minturn V. Chace  
The Curtis W. McGraw Foundation  
The National Philanthropic Trust  
Mr. and Mrs. Arthur Ross  
Sage Foundation

The Seth Sprague Educational and  
Charitable Foundation  
World Monuments Fund

### \$5,000-\$9,999

Bloomberg  
Mr. and Mrs. I. Townsend Burden III  
The Charles Engelhard Foundation  
Hester Diamond  
Didier Aaron, Inc.\*  
Dover Street Gallery\*  
F. M. Kirby Foundation, Inc.  
JPMorgan Chase Foundation  
The Ludwig W. Frohlich Charitable Trust  
Strong-Cuevas Foundation  
Mr. and Mrs. John L. Townsend III

### \$2,500-\$4,999

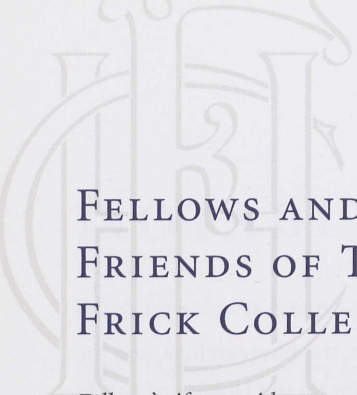
Acorn Foundation, Inc.  
American Federation of Arts  
W. Graham Arader III  
W. Mark Brady  
The Burlington Magazine Foundation Inc.  
Cravath, Swaine & Moore LLP  
Mr. and Mrs. Robert F. Erburu  
Mr. and Mrs. Nicholas H. J. Hall  
Michael Tuch Foundation, Inc.  
Diane Allen Nixon  
Oceanic Heritage Foundation  
Charles A. Ryskamp

Adelaide Frick Trafton and  
Jotham A. Trafton

### \$500-\$2,499

American Trust for the British Library  
Atwater Kent Foundation  
Mrs. William Stratton Clark  
Consulate General of the Netherlands  
Robert de Rothschild  
Carl Ginsburg  
Mr. and Mrs. Robert G. Goelet  
Handy & Harman Foundation  
Mrs. Horace Havemeyer  
Raymond Horowitz  
Kniedler & Company  
Mr. and Mrs. Jon Landau  
Scott Luellen  
Gina G. MacArthur  
Metropolitan New York Library Council  
Charlotte Moss  
Mr. and Mrs. Paul G. Pennoyer, Jr.  
Pillsbury Winthrop  
Elaine L. Rosenberg  
Jeffrey M. Siegal  
June deH. Weldon  
Dr. and Mrs. Malcolm H. Wiener

\* *Benefit event co-sponsored with  
The Frick Collection*



## FELLOWS AND FRIENDS OF THE FRICK COLLECTION

*Fellows' gifts provide unrestricted annual support to The Frick Collection.*

### Honorary Fellows

Mrs. Walter H. Annenberg  
Mr. and Mrs. Perry Richardson Bass  
Monsieur Le Comte d'Haussonville  
Theodore Dell  
Dr. and Mrs. Ira H. Kaufman  
Mr. and Mrs. John L. Marion  
Mrs. Paul Mellon  
Edgar Munhall  
Charles A. Ryskamp  
Mrs. William Suhr  
Mr. and Mrs. Eugene Victor Thaw  
Frederica von Stade

### Henry Clay Frick Fellows

Mr. and Mrs. Peter P. Blanchard III  
Mr. and Mrs. Jeremiah M. Bogert  
Mr. and Mrs. Patrick Durkin  
Dr. and Mrs. Henry Clay Frick II  
Enid A. Haupt  
Mr. and Mrs. Henry Luce III  
Mr. and Mrs. Howard Phipps, Jr.  
Mr. and Mrs. Juan A. Sabater  
Mr. and Mrs. Oliver K. Stanton  
John A. van Beuren  
Mrs. Charles Wrightsman  
Dr. Jonathan Zizmor and  
Alexandra Zizmor

### Sustaining Fellows

Mr. and Mrs. Minturn V. Chace  
Mr.\* and Mrs. Stephen M. Kellen  
Diane Allen Nixon  
Gianluigi and Claudia Quentin

\* deceased

### Supporting Fellows

Irene Roosevelt Aitken  
Mr. and Mrs. I. Townsend Burden III  
Mrs. Christopher C. Y. Chen  
Catherine G. Curran  
Nelly Arrieta de Blaquier  
Mr. and Mrs. Peter Duchin  
Mr. and Mrs. Steven Einhorn  
Mr. and Mrs. Robert F. Erburu  
Francis Finlay  
Joanne du Pont Foster  
The Honorable Sir David and  
Lady Gibbons  
Randall and Anne Greene  
Mrs. Henry J. Heinz II  
Mr. and Mrs. Howard G. Lepow  
Diana Mercer and Heather Sue Mercer  
Roland Pease  
Marc Porter  
Dr. and Mrs. James S. Reibel  
David Rockefeller  
Dr. and Mrs. Nathan Saint-Amand  
Mr. and Mrs. Robert L. Shafer  
Mr. and Mrs. John L. Townsend III  
Susan Erpf Van de Bovenkamp  
Dr. and Mrs. Malcolm H. Wiener

### Contributing Fellows

Kim C. and Gloria S. Anderson  
Mr. and Mrs. Christopher Ankner  
Anne H. Bass  
Patti Cadby Birch  
Mr. and Mrs. Thomas A. Cassilly  
John B. Coleman  
The Honorable and Mrs. Walter  
J. P. Curley  
Domitilia M. dos Santos  
Mr. and Mrs. Walter A. Eberstadt  
Elise D. Frick and John A. Garraty  
Stephen A. Geiger  
Mr. and Mrs. Peter Goltra  
Albert Gordon  
Mr. and Mrs. Donald J. Gordon  
Agnes Gund and Daniel Shapiro  
Martha M. Hare  
Spencer and Marlene Hays

Michael and Jane Hoffman  
Franklin Y. Hundley  
Peter W. Josten  
Mr. and Mrs. Eugene M. Lang  
Mr. and Mrs. Christopher M. Lehman  
Arthur L. Loeb  
James C. and Marie Nugent-Head Marlas  
Mrs. John P. McGrath  
Mr. and Mrs. William J. Michaelcheck  
Charles A. Miller, Jr., and Chas A. Miller III  
Mr. and Mrs. Bernard G. Palitz  
Mr. and Mrs. Matthew Perkins  
Mr. and Mrs. François Poulet  
Mr. and Mrs. H. Charles Price III  
Kristen Richardson  
Mr. and Mrs. Alexander Roepers  
Mr. and Mrs. Felix G. Rohatyn  
Mrs. William D. Roosevelt  
Alfred and Jane Ross  
Mr. and Mrs. H. Jonathan Rotenstreich  
Emilia A. Saint-Amand and Frederick  
Krimendahl II  
Mr. and Mrs. Lawrence B. Salander  
Roberta and Irwin Schneiderman  
Elizabeth and Stanley DeForest Scott  
Mr. and Mrs. Robert K. Steel  
Mr. and Mrs. George Wachter  
Mr. and Mrs. Ira D. Wallach  
Mr. and Mrs. Karl Wamsler  
Brenda Weeks-Nerz  
Mr. and Mrs. Edwin L. Weisl, Jr.  
Shelby White  
William J. Williams, Jr., and  
Barbara A. Reuter

### Fellows

Warren Adelson  
Julian Agnew  
Mr. and Mrs. Neale M. Albert  
Mr. and Mrs. Armin Allen  
Mrs. C. Robert Allen  
Mrs. Philip Alperdt  
Bert Amador  
Anthony Nippert Ames  
Dr. Madelyn Antoncic  
Mark and Gail Appel

Mr. and Mrs. R. Leigh Ardrey  
 Andrew and Amy Arkin  
 Mrs. J. Sinclair Armstrong  
 Carol Aronson and Don Shobry  
 Edgar Aronson  
 Vera Miller Aryeh  
 Mrs. Vincent Astor  
 Mr. and Mrs. Ronald R. Atkins  
 Mr. and Mrs. Robert F. R. Ballard  
 Elizabeth A. Baltz  
 Dr. and Mrs. Hugh R. K. Barber  
 Shelley Barber  
 Dr. and Mrs. Robert Bard  
 Mr. and Mrs. Jonathan S. Bean  
 David Beattie  
 Mr. and Mrs. Frederick W. Beinecke  
 Josephine L. Berger-Nadler and  
 Dr. M. Leon Canick  
 Mrs. E. Albert Berol  
 Mr. and Mrs. W. Robin Blackhurst  
 Mr. and Mrs. Marco P. Bloemsma  
 Gary M. Bloom  
 Mr. and Mrs. Stanley M. Bogen  
 J. Elizabeth Bradham  
 W. Mark Brady  
 Dr. Goodwin M. Breinin  
 Mr. and Mrs. Garrison W. Brinton  
 Mr. and Mrs. Jonathan M. Brown  
 Charles F. Brush  
 Mrs. Jackson Burke  
 Mrs. James E. Burke  
 Miriam Cahn  
 David G. Carter  
 Guy Cary  
 Carroll J. Cavanagh and Candida N. Smith  
 Edward Lee Cave  
 Mr. and Mrs. Christopher T. Clark  
 Mrs. William Stratton Clark  
 J. Patrick Cooney  
 T. A. Cox  
 Edna Craddock  
 Robert Dance  
 Mr. and Mrs. Stephen Daniel  
 Michel A. David-Weill  
 Kirk A. de Gooyer and Richard Collins  
 Gonzalo de Las Heras  
 Margotte Marquesa de Lyon  
 David H. De Weese  
 Hester Diamond  
 Marshall Dill  
 Robert N. Dooner  
 Mr. and Mrs. Glenn B. Dorr III  
 Mr. and Mrs. L. F. Boker Doyle  
 Pierre G. Durand  
 Douglas Durst  
 Mrs. Charles H. Dyson  
 Mr. and Mrs. John S. Dyson  
 Mr. and Mrs. John L. Eastman  
 Joan K. Easton  
 Bruno and Silvia Eberli  
 Don F. Eddy and Leigh Behnke  
 Marianne Elrick-Manley  
 Mary E. Emerson  
 Mr. and Mrs. Anthony T. Enders  
 J. O. Fairfax  
 Mr. and Mrs. Walter P. Fekula  
 Mr. and Mrs. Richard Feldstein  
 Mrs. Anastassios Fondaras  
 David B. Ford  
 Barbara Fox-Bordiga  
 Mr. and Mrs. Peter Frelinghuysen  
 Mr. and Mrs. Lawrence Friedland  
 Mr. and Mrs. Leandro S. Galban, Jr.  
 Dr. and Mrs. Charles G. Garbaccio  
 Mr. and Mrs. Bruce Gelb  
 Rick and Belinda Gilbert  
 Henry P. Godfrey and Ginger Schnaper  
 Mr. and Mrs. Eugene Goldberg  
 Mr. and Mrs. William T. Golden  
 Mr. and Mrs. Alain Goldrach  
 Mr. and Mrs. Hubert L. Goldschmidt  
 Alexandra W. Golinkin  
 Mr. and Mrs. Philip C. Gorrivan  
 Mr. and Mrs. Paul Gourary  
 Mrs. Oliver R. Grace  
 Mrs. David Granger  
 Mr. and Mrs. Marco Grassi  
 Mrs. William S. Gray  
 Alexis Gregory  
 Antonia and George Grumbach  
 Ambassador and Mrs. Henry A. Grunwald  
 Mr. and Mrs. John Gutfreund  
 Charles Hack and Angella Hearn  
 Ben Ali Haggin  
 Mr. and Mrs. Nicholas H. J. Hall  
 Mr. and Mrs. Robert Hanke  
 Michele Beiny Harkins  
 Ruth Ann and William Harnisch  
 Dr. Lucinda A. Harris  
 Pauline L. Harrison  
 Mr. and Mrs. Alan Hartman  
 Mr. and Mrs. Carl B. Hess  
 Marieluse Hessel and Edwin Artzt  
 Mr. and Mrs. John R. Hewitt  
 Luule N. Hewson  
 Mrs. M. T. Hirschler  
 Mr. and Mrs. G. Raymond Hodil, Jr.  
 Frank L. Hohmann III  
 Mrs. Bruce Duff Hooton  
 Mr. and Mrs. Charles Hoppin  
 Dr. Bruce C. Horten  
 Mr. and Mrs. James Houghton  
 Stephen Hundiak  
 June Hunt-Mayer  
 Mr. and Mrs. John W. Ingraham  
 Mr. and Mrs. Richard E. Jaffe  
 Lisa D. Johnson and Williams Cosby  
 William Jordan, Jr.  
 Denise and Morton Joselson  
 Mr. and Mrs. Warren S. Josephy  
 Jill and Jeff Joyce  
 Mrs. Allan H. Kalmus  
 The Honorable Bruce M. Kaplan and  
 Janet Yaseen  
 Mr. and Mrs. Mark N. Kaplan  
 William W. Karatz  
 Nadine Kasuga  
 Mr. and Mrs. William Kaufmann  
 Robert G. Keller  
 Gerold Klauer and Dr. Jana Klauer  
 Frederick R. Koch  
 Phyllis L. Kossoff  
 Angie Z. Kozlowski  
 Geraldine Sapolsky Kunstadter  
 George Labalme, Jr.  
 Mr. and Mrs. Edward J. Landrigan  
 Dr. Edith Langner and Michael Coles  
 Joseph William Laraia and Mary Motyl

Jane Lattes and Norbert Swislocki  
Mr. and Mrs. Douglas B. Leeds  
John J. Leiser  
Dale and Chari LeMasters  
Mr. and Mrs. William D. Lese  
Mr. and Mrs. John L. Lindsey  
Gail P. Lloyd  
Teresa Longyear and David Bull  
Robert Loper  
Sandra Ann Mabritto  
Gina G. MacArthur  
Mr. and Mrs. John MacAskill  
Duncan MacGuigan  
Elizabeth Madden  
Dr. Edward A. Mainzer  
Mr. and Mrs. Peter Malkin  
Lori Manoocherian  
Charlene and Tom Marsh  
Michael T. Martin  
Joseph F. McCrindle  
Richard M. McGonigal and  
Ellen E. Hausler  
Mr. and Mrs. John McNiff  
Mr. \* and Mrs. Christian A. Melhado  
Gregory Mesniaeff and Elizabeth Burke  
Mr. and Mrs. Jeremiah Milbank III  
Harvey S. Shipley Miller  
Stanley R. and Catharine M. Miller  
Barbara B. Millhouse  
Barbara S. Mosbacher  
Ruth A. Mueller  
Eldo S. Netto, Jr.  
Jill Newhouse  
Rodney W. Nichols  
Mr. and Mrs. Peter Nitze  
Erik P. Nygaard  
Thomas E. O'Brien  
Dr. Norman Orentreich  
David T. Owsley  
Anka K. Palitz  
Mr. and Mrs. Gregory K. Palm  
Mrs. Frank Papp  
Mr. and Mrs. Douglas L. Paul  
Mr. and Mrs. John Whitney Payson

Dr. David B. Pearce  
Mr. and Mrs. Norman L. Peck  
Mr. and Mrs. Paul G. Pennoyer, Jr.  
Mr. and Mrs. Michael W. Percopo  
Mr. and Mrs. Mark Perlbinder  
Ivan and Winifred Phillips  
Max Pine and Lois Mander  
Mr. and Mrs. Leon B. Polsky  
Dr. and Mrs. Simon B. Poyta  
Mr. and Mrs. Dale J. Precoda  
Mrs. Lewis T. Preston  
Mr. and Mrs. Samuel F. Pryor IV  
Sheila Pulling  
Yvonne Quinn  
Ellen E. Rand  
Mr. and Mrs. William P. Rayner  
Edith T. Reed and Dorothy Reilly  
Mr. and Mrs. Adam Reeder  
Mr. and Mrs. Robert Reilly  
Hans R. Reinisch  
Scott N. Resnick  
Mr. and Mrs. Robert Riggs  
Mr. and Mrs. John R. Robinson  
Mr. and Mrs. John J. Roche  
Mr. and Mrs. Jonathan Rosen  
Mr. and Mrs. Arthur Ross  
Cye and Rona Ross  
Nanette Ross  
Dr. Caroline Rubinstein and  
Phillip M. Winegar  
Dr. A. Joseph Rudick and  
Jennifer Ash Rudick  
Mr. and Mrs. Winthrop Rutherford, Jr.  
Mr. and Mrs. Derald H. Ruttenberg  
Mr. and Mrs. Peter M. Sacerdote  
Mr. and Mrs. John H. Sack  
Richard Salomon  
Alan E. Salz  
Mr. and Mrs. Alexander C. Sanger  
Robert M. Saunders and Susan Gaum  
Princess Maria-Christina  
Sayn-Wittgenstein  
Mr. and Mrs. Henry Schacht  
C. M. Schamroth  
Dr. and Mrs. Stephen K. Scher  
Susan Schinitsky

Dr. Ralph Schlaeger  
Mary Coxe Schlosser  
Michael and Dafna Schmerin  
Mrs. John A. Scrymgeour  
Larry Shar  
Mr. and Mrs. Constantine  
Sidamon-Eristoff  
Dr. Robert B. Simon  
J. L. H. Simonds  
Mr. and Mrs. Gary Siska  
Donald G. Sisler  
Mr. and Mrs. James Baker Sitrick  
Mr. and Mrs. H. R. Slack  
Kathleen Sloane  
Mr. and Mrs. Robert A. Smith  
Suzette de Marigny Smith  
Margaret M. Sokol  
James Sollins and Sherry Soforo  
Beverly Sommer  
Ira Spanierman  
George Spera and Jane Ginsburg  
Mr. and Mrs. Jerry Spiegel  
Elizabeth M. Stafford  
Mr. and Mrs. Kenneth I. Starr  
Dr. Axel Stawski  
Ethel J. Steindl and Mark Schwarz  
Mr. and Mrs. Garrick C. Stephenson  
Mr. and Mrs. Robert A. Stern  
Mr. and Mrs. Gerald Stiebel  
Elizabeth F. Stribling and Guy Robinson  
Elizabeth Strong-Cuevas  
Mr. and Mrs. William H. Stuebe  
Dr. and Mrs. Paul Sullivan  
Governor and Mrs. J. Fife Symington III  
Anne M. and William Tatlock  
Mr. and Mrs. Gregory F. Taylor  
Mrs. Henry J. Taylor  
Margaretta Taylor  
Mrs. Milton Teicher  
Mr. and Mrs. Rodman K. Tilt, Jr.  
David and Julie Tobey  
David Trachtenberg and Rick Wilson  
The Honorable and Mrs. John Train  
Mr. and Mrs. Roger Tuckerman  
Kentaro Umezaki  
Paul Underwood

\* deceased



Marilyn Ungar  
 Mr. and Mrs. Herbert Wachtell  
 Mr. and Mrs. Paul Wagner  
 Thomas B. Walker III  
 Mr. and Mrs. John L. Warden  
 Elizabeth and Robert Webster  
 Joel Weissman  
 Mr. and Mrs. Karel Westerling  
 The Honorable John C. Whitehead  
 Wheelock Whitney III  
 Dr. and Mrs. Robert D. Wickham  
 Mr. and Mrs. Bruce G. Wilcox  
 Mr. and Mrs. Jarvis Wilcox  
 Duane Wilder  
 Walter J. and Sandra Wilkie  
 Mr. and Mrs. Basil C. Williams  
 Francis H. Williams  
 Peter A. Williams  
 Reid Williams  
 Mr. and Mrs. James J. Wilson  
 Mrs. Robert Winthrop  
 Morton and Esther Wohlgemuth  
 Diane R. Wolf  
 Mr. and Mrs. Gene M. Woodfin  
 William H. Wright II  
 David and Constance Yates  
 George M. Yeager  
 Emily A. Youssouf  
 George J. Zahringer

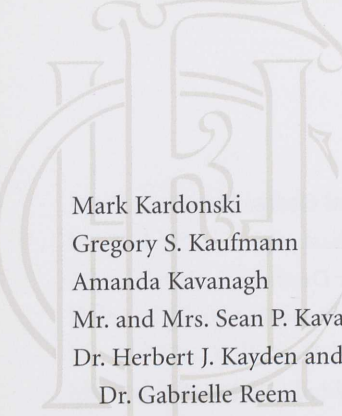
### **Non-Resident Fellows**

Dr. Andreas Von Albertini  
 Katrin Bellinger and Harald Weinhold  
 Frank A. Benevento II  
 Robert Broberg  
 Dianne A. Bruce  
 Mr. and Mrs. Childs Frick Burden  
 Robert M. Edsel  
 Stephen A. Hansel  
 Bayard Henry  
 Mr. and Mrs. Robert E. Kulp, Jr.  
 John B. Pierce  
 David E. Rust  
 Adrian Sassoon  
 Mrs. Olcott D. Smith  
 Mr. and Mrs. John Sweetland

### **Young Fellows**

Gilda Acosta  
 Alexandra Hayes Adame  
 Mr. and Mrs. Babak Afkhami  
 Mr. and Mrs. Jose Maria Aldenueva  
 Edward A. Allen  
 Anthony Nippert Ames  
 R. Martin Andersons  
 James S. Ardrey and Stefanie Ardrey-Lally  
 Celine Armstrong  
 Darren Bagert  
 DeLaney Bagwell  
 Mr. and Mrs. Manuel Balbontin  
 Steven Baumruk  
 Fabiola Beracasa  
 Mr. and Mrs. William D. Bisceglia  
 Christopher Bishop  
 Mr. and Mrs. C. F. David Boit  
 Blair Brickman  
 Mabel Brodrick-Okereke  
 Jonathan Burkan  
 Barry Paul Burton  
 Sarah Camp  
 Joseph Harding and Thomas Cannon  
 Margaret F. Carpenter  
 Andrew Catapano  
 Mary Catlett  
 Mr. and Mrs. Jack E. Cay IV  
 Eduardo and Ana Centola  
 Dmitri Chekaldin and Dmitry Sholokhov  
 Angelo Cianciulli Arnone  
 Alexander Cicogna Mozzoni  
 Marina Rust Connor and Ian Connor  
 Alexandra R. Coolidge  
 James Corl  
 Jody W. Covert  
 Mr. and Mrs. Douglas Davis  
 Clay Mitchell Dean  
 William Deitrick, Jr.  
 John H. de Neufville  
 Charles Detrizio  
 Frank-Willem de Wit  
 Mr. and Mrs. Brendan Dillon  
 Arpi Djenguerian  
 Alicia Doherty  
 Benjamin F. Doller

Marie Douglas and George David  
 Christopher Dunham and  
 Lindsay Gruber Dunham  
 Suzzara and John Durocher  
 Jacqueline H. Eckstein  
 Mr. and Mrs. Jean-Louis B. Ecochard  
 Steven and Jennifer Eisenstadt  
 Mr. and Mrs. Louis Elson  
 Tamara Fecci  
 Joseph and Sabine Fichera  
 Pamela Lynn Fielder  
 John Leopoldo Fiorilla  
 Clay Floren  
 Amy Mazzola Flynn and Tad Flynn  
 Robert Fogelson and Victoria Voytek  
 Mary B. Gallagher  
 Mr. and Mrs. Sergio Galvis  
 Paige Gamble  
 Mimi Gammill  
 Anusia Gayer  
 Jennifer Gerstenfeld  
 Mr. and Mrs. Justin Gibbons  
 Alexandra G. Goelet  
 Anthony J. Gordon  
 Marne Grainger and Todd Cavaluzzi  
 Ann Marie Grasso  
 Nicholas Griffin  
 Melissa Grundman  
 Marie Antoinette Handler  
 Yvonne Handler  
 Mr. and Mrs. Peter Harwich  
 Sachiko Hashimoto  
 Mark Anthony Hatsis  
 Claire Heleniak  
 Gregory A. Herr  
 Carrie Higginbotham  
 Mr. and Mrs. Mark Hoffman  
 Tiziana Holmgren  
 Heather H. Hoyt  
 Dr. Olivia Z. Hutchinson and  
 Daniel L. Hutchinson, Jr.  
 Kathleen Intravia and Reha Kocatas  
 Julian Iragorri II  
 Mr. and Mrs. Albert Joerger  
 Laura Johansen  
 Nastassia Kantorowicz



Mark Kardonski  
Gregory S. Kaufmann  
Amanda Kavanagh  
Mr. and Mrs. Sean P. Kavanagh  
Dr. Herbert J. Kayden and  
Dr. Gabrielle Reem  
Christiana Killian  
Yoo-Jong Kim  
Prince Rudolf Kniase Melikoff  
Elena Morris Kornbluth  
Mr. and Mrs. Thomas Korossy  
Andrew Kramer  
Melyora E. Kramer  
Joy Krause  
Jay Frederick Krehbiel  
Andrew Kronenberg and Jane Schneirov  
Charlene Kuo  
Brianna W. Lam  
Nile Lanning  
Ann Lee  
John Leo  
Nicole Liarakos  
Cheryl Liebman  
Mr. and Mrs. Richard Lightburn  
Mr. and Mrs. Robert Lindgren  
Brandi Lipton  
Renee Liu  
Mr. and Mrs. James Loeffler  
Mr. and Mrs. Thomas Loring  
Laura Seale Lovelace  
John Lukovits  
Amanda Mallan  
Kelly Mallon  
C. C. Marsh  
Debby Mayer  
Carlos A. Maymi and Steven Rapkin  
Dr. John E. Meade  
Mr. and Mrs. Gregory Melconian  
Richard Mendlowitz  
Rebekah Mercer  
Mr. and Mrs. Eugene Mercy, Jr.  
Natalie B. Milani  
Dr. Mark D. Militana  
Mark Evan Miller  
Pamela and Robert Miller

Sylvester Minitier IV  
Alison Minton  
Dr. Alan Mirasol  
Edward and Bettina Mirsepahi  
Mr. and Mrs. Alan Mitchell  
Mr. and Mrs. Donald L. Morgan  
Mr. and Mrs. John Henry Moulton  
Mr. and Mrs. John J. Mulligan III  
Mr. and Mrs. Richard Murawczyk  
Mark Murray  
Vikram Nagrani  
Sharon Nash  
Jennifer J. Nilles  
James Nuckel  
Cristin M. O'Hara and Michael S. Sullivan  
Stephen Olsen and Annie Weber  
Alixine O'Malley  
Melissa O'Neill  
Kira von Ostenfeld-Sus  
Arianna Packard  
Mr. and Mrs. Kevin Parker  
Roxana Pechero  
Jacqueline Piraquive  
Samuel Powers  
Diana Pulling  
Amy Margherita Puzio  
Norman D. Rau  
Katherine Reibel and Morgan Tupper  
Marna Ringel  
Elizabeth Robertshaw  
Emily S. Robin  
Dr. and Mrs. Rowland Perry Robinson  
Jennifer Roesner and Nicole Fusaro  
Jill Ross  
Beatrice Rossi-Landi  
Robert Roth  
Eugenie Roussel  
Caroline Rowley  
Elisabeth Saint-Amand  
N. Alexander Saint-Amand  
Brandt and Martelia Sakakeeny  
Stuart M. Salenger  
Mr. and Mrs. Michael L. Santini  
Danielle Sapse  
Anne Schack

Jennifer Schwebel  
Erica M. Selimotic  
Joanne Sepetjian  
LaCary Sharpe  
Mr. and Mrs. Alexander Shepard  
R. Andrew Shore  
Mr. and Mrs. Gary Siegler  
Mr. and Mrs. Andrew Silverman  
Debbie Silverman  
Elizabeth Simon  
Michael Kevin Singman-Asté  
Clare Smith  
Stephanie Solomon  
Mr. and Mrs. Carl Sorenson  
Scott and Monica Steele  
David M. Steiner  
Conrad C. Steinmann  
Randall Stempler  
Adrienne Stone  
Christina Sullivan  
Mr. and Mrs. J. Fife Symington IV  
Richard E. Symington  
Thomas P. Symington  
Kai-Teh Tao and Kai Shing Tao  
Felicia Taylor  
Mr. and Mrs. Andrew Thomas  
Kimberly S. Thomsen  
Edward Toptani  
Douglas A. Trafelet  
Gayle K. Turk  
Leonora Volpe and Howard Mulligan  
Mr. and Mrs. Richard H. Wagle  
David Waldes  
Dr. Elizabeth Weinman  
Mr. and Mrs. David Wells  
Timothy J. Whealon  
Genevieve Wheeler Brown and  
Peter Chase Hayden Brown  
David White  
Suzanne W. Wilson  
Laura Winters  
Whitney Wolfe  
Jennifer Wright  
David Yeager  
Joseph A. Young

## **Sustaining Friends**

Mr. and Mrs. Michael Nash Ambler  
Arlene J. Blau  
Leonard and Adele Block  
Nissan Boury  
Mr. and Mrs. L. Jay Cross  
Mr. and Mrs. Richard M. Danziger  
Mrs. Vincent de Roulet  
Jerald Dillon Fessenden  
Jill P. Fowler  
P. R. Frederick  
Mr. and Mrs. Bruce Geismar  
Cosby W. George and Timothy M. George  
Abby Gilmore  
Kate Gubelmann  
Georgia Hiden  
Mr. and Mrs. John R. Hupper  
Georgianne M. and Richard A. Kasuli  
Jennifer R. Kelley  
Mr. and Mrs. Walter C. Klein  
Mr. and Mrs. Thomas W. Lambert  
Mr. and Mrs. Alexander M. Laughlin  
Marguerite Manley\*  
Michael J. and Regina F. McCormick  
Mr. and Mrs. James J. Murtha  
Roy R. Neuberger  
Mr. and Mrs. W. Platt  
Dr. Wilbur Rabinowitz and  
Audrey Rabinowitz  
Frank E. Richardson and the  
Honorable Kimba M. Wood  
Mr. and Mrs. Philip R. Rotner  
Mr. and Mrs. Stuart B. Schimmel  
Eileen C. and Terrance L. Schwab  
Anthony J. and Lorriane Servino  
Grant and Jacqui Smith  
Howard Sosin  
Anne Stean  
Andrea Woodner  
Roger L. Yaseen

## **Supporting Friends**

Alicia Lambert Albert  
Alexander Apsis  
Mr. and Mrs. Seymour R. Askin, Jr.

Marvin and Mary Ellin Barrett  
Jill V. and Lewis W. Bernard  
Sybil Bernstein  
Mia Weiner and Martin Braid  
Constance R. Caplan  
Debrah Charatan  
Daniel R. Childs  
Mr. and Mrs. Garretson W. Chinn  
Dr. David Cooperman and  
Dr. Amanda Cooperman  
Mr. and Mrs. Thomas M. Evans, Jr.  
Mr. and Mrs. Bruce A. Factor  
Barbara G. Fleischman  
Richard E. Ford  
Mr. and Mrs. Robert L. Freedman  
Mr. and Mrs. Cono Fusco  
Thomas R. Gallagher  
Reverend Davis Given  
Marcia Goldberg  
Kathi Watts Grossman  
Herbert B. Halberg  
Mimi Halpern and Stephen Morrow  
John Hartje and Carol Camper  
Mr. and Mrs. John Hearst  
Inge Heckel  
Elizabeth J. Hodge  
Gordon A. Holmes  
Robin MacDermott and Robert W. Holmes  
Anne Gibboney Huske  
Mr. and Mrs. Edward Hyman, Jr.  
Elsbeth Jordi  
Alan Kanzer  
Patricia H. Keesee  
Garrett Kirk  
Mr. and Mrs. Peter Kreindler  
Mr. and Mrs. Seymour Lichtenstein  
Elizabeth Lifschultz  
Margie Loeb  
Pauline March  
Ann Bell McCoy  
Kay McCrosky  
Mr. and Mrs. Eugene Mercy, Jr.  
Payne Whitney Middleton  
Mr. and Mrs. Richard W. Moore  
David Newby

Emily H. Trueblood and  
Ernest T. Patrikis  
Andrew S. Paul  
Marilyn B. Polite  
Peter and Suzanne Pollak  
Rory J. Radding and Nina S. Duchaine  
Jane L. Richards  
Jennifer Rogers and Frances Rogers  
Ralph Rucci  
David F. Ryan and Linda Y. Thung-Ryan  
Dr. and Mrs. Thomas Sculco  
Peter and Courtney Simon  
Dr. and Mrs. Peter Som  
Peter Steinman  
Veronica M. Stubbs  
Gary Thalheimer  
Dianne Wallace  
Thomas R. Warfield  
Alicia R. Westmoreland  
Helen M. Wright

## **ANNUAL FUND DONORS**

### *\$10,000 AND ABOVE*

The Annenberg Foundation  
Mr. and Mrs. Peter P. Blanchard III  
Mr.\* and Mrs. Stephen M. Kellen

### *\$5,000-\$9,999*

Nelly Arrieta de Blaquier  
Arthur L. Loeb

### *\$2,500-\$4,999*

Mrs. Douglas Auchincloss  
Mr. and Mrs. H. Charles Price III

### *\$500-\$2,499*

Mr. and Mrs. Jeremiah M. Bogert  
Laurel Ann Brien  
Mr. and Mrs. Minturn V. Chace  
Mr. and Mrs. Garretson W. Chinn  
Hester Diamond

\* deceased

Mr. and Mrs. John S. Dyson  
 Mr. and Mrs. Thomas M. Evans, Jr.  
 The Finkelstein Foundation  
 Mr. and Mrs. Lucius L. Fowler  
 Stephen A. Geiger  
 The Honorable Sir David and  
 Lady Gibbons  
 Reverend Davis Given  
 Robert B. Goldsmith and  
 Dr. Teresa A. Carbone  
 Mrs. Pauline L. Harrison  
 Spencer and Marlene Hays  
 Gordon A. Holmes  
 Dr. and Mrs. Ira H. Kaufman  
 Joseph Leo Koerner  
 Mr. and Mrs. Jon Landau  
 Mr. and Mrs. Richard E. Oldenburg  
 Mr. and Mrs. Norman L. Peck  
 Mr. and Mrs. Paul G. Pennoyer, Jr.  
 Mr. and Mrs. Allan J. Robbins  
 Simon M. Schama and  
 Dr. Virginia E. Papaionannou  
 Mr. and Mrs. James Baker Sitrick  
 Elizabeth F. Stribling and Guy Robinson  
 Margaretta Taylor  
 Mr. and Mrs. Wynant D. Vanderpoel III  
 Dr. Dietrich von Bothmer  
 Elizabeth and Robert Webster  
 Marissa C. Wesely  
 Francis H. Williams

## CORPORATE MEMBERS

### \$50,000 AND ABOVE

Christian Dior

### \$25,000-\$49,999

First Republic Bank  
 Pfizer Inc.  
 Westbrook Partners, LLC  
 W. P. Stewart & Co., Ltd.

### \$10,000-\$24,999

Moët & Chandon Champagne  
 Tiffany & Co.

### \$5,000-\$9,999

Bloomberg  
 Goldman, Sachs & Co.  
 The H. W. Wilson Foundation  
 Iridian Asset Management, LLC  
*Town & Country*  
 UBS

### \$2,500-\$4,999

Altria Group, Inc.  
 American Express Company  
 Chanel, Inc.  
 Colgate-Palmolive Company  
 John Wiley & Sons, Inc.  
 Liz Claiborne Foundation  
 Merrill Lynch & Co., Inc.  
 Rolex Watch U.S.A., Inc.  
 The Walt Disney Company

## Matching Gift Companies

Altria Employee Involvement Programs  
 AT&T Foundation  
 AXA Foundation  
 Bank of America  
 Bayerische Hypo- und Vereinsbank  
 Bunge Corporation Foundation  
 The Chase Manhattan Foundation  
 Computer Associates International, Inc.  
 Deutsche Bank Americas Foundation  
 ExxonMobil Matching Gifts Programs  
 IBM Corporation  
 The J. Paul Getty Trust  
 John Wiley & Sons, Inc.  
 JPMorgan Chase Foundation  
 The May Department Stores  
 Company Foundation  
 Mayer, Brown & Platt  
 Mobil Foundation, Inc.  
 The Moody's Foundation Matching  
 Gift Program  
 Penguin Group (USA) Inc.  
 Pfizer Foundation  
 Sempra Energy Trading Corp.  
 The William and Flora Hewlett  
 Foundation

## AUTUMN DINNER

OCTOBER 20, 2003

### *Autumn Dinner Benefactors*

Mr. and Mrs. Howard Phipps, Jr.

### *Autumn Dinner Patrons*

Irene Roosevelt Aitken  
 W. Mark Brady  
 Charles C. Butt  
 Mr. and Mrs. Minturn V. Chace  
 Dr. and Mrs. Henry C. Frick II  
 The Helen Clay Frick Foundation  
 Diane Allen Nixon  
 Patterson, Belknap, Webb & Tyler LLP  
 Melvin R. Seiden and Janine Luke  
 Isabel and Bruce Wilcox

### *Autumn Dinner Supporters*

Arnhold Foundation  
 Peter and Sofia Blanchard  
 Nelly Arrieta de Blaquier  
 Mr. and Mrs. I. Townsend Burden III  
 Mr. and Mrs. L. F. Boker Doyle  
 Martha M. Hare  
 Iridian Asset Management, LLC  
 Mr.\* and Mrs. Stephen M. Kellen  
 Jon and Barbara Landau  
 Mr. and Mrs. John R. Robinson  
 Mr. and Mrs. Juan A. Sabater  
 Dr. and Mrs. Karl Wamsler

### *Autumn Dinner Friends*

Julian Agnew  
 Dr. and Mrs. Hugh R. K. Barber  
 Mrs. E. Albert Berol  
 Jill and Richard Blanchard  
 Mr. and Mrs. Jeremiah M. Bogert  
 Guy Cary  
 Mrs. Christopher C. Y. Chen  
 Christie's  
 Edna C. Craddock  
 Elizabeth de Cuevas  
 The Honorable and Mrs. Walter J. P. Curley

\* deceased

Princesse Marie-Sol de La Tour d'Auvergne  
Mrs. Charles H. Dyson  
Mr. and Mrs. Walter A. Eberstadt  
Helen Cosantino Fioratti  
Anastassios Fondaras  
Joanne du Pont Foster  
Elise D. Frick and Jack Garraty  
Mr. and Mrs. Alain Goldrach  
Mr. and Mrs. Hubert L. Goldschmidt  
Alexis Gregory  
Mr. and Mrs. Nicholas H. J. Hall  
Mr. and Mrs. John R. Hearst, Jr.  
Mr. and Mrs. Mauro A. Herlitzka  
Frederick D. Hill  
Mrs. Jeffrey Hughes  
Jill and Jeff Joyce  
Jay Frederick Krehbiel  
George Labalme, Jr.  
Dr. Edie Langner and Michael Coles  
June and Frank\* Larkin  
Mr. and Mrs. Howard G. Lepow  
Harriette and Noel Levine  
Ambassador John L. Loeb, Jr.  
Mr. and Mrs. Thomas Loring  
Susan Lyall and Hans P. Utsch  
Elizabeth Madden  
Rodney W. Nichols  
Anka K. Palitz  
Samuel H. Kress Foundation  
Robert S Pirie  
Dr. and Mrs. Simon B. Poyta  
Mrs. Lewis T. Preston  
Gianluigi and Claudia Quentin  
Dr. and Mrs. James S. Reibel  
Caroline Rubinstein and Phillip M. Winegar  
Mr. and Mrs. Stanley DeForest Scott  
Mrs. John A. Scrymgeour  
Kathleen Sloane  
Elizabeth F. Stribling and Guy Robinson  
Isabel C. Stuebe  
Mr. and Mrs. David M. Tobey  
Sotheby's  
Dr. and Mrs. Robert D. Wickham  
Mr. and Mrs. James J. Wilson  
Alan Wintermute  
Mr. and Mrs. Gene M. Woodfin

Jourdan Arpelle-Ziegler and  
Henry Steinway Ziegler  
Dr. Jonathan Zizmor and  
Alexandra Zizmor

*Autumn Dinner Contributors*

Gillian Attfield  
Mr. and Mrs. Sid R. Bass  
Catherine and Robert Brawer  
Jeannie and Robert Conway  
Clara Dale  
Dodge & Cox  
Florence B. D'Urso  
Shelley and Steven Einhorn  
Mr. and Mrs. John Elliott  
Emily Fowler  
Barrett Frelinghuysen  
Victor Grann  
Agnes Gund and Daniel Shapiro  
Pauline L. Harrison  
Kitty Carlisle Hart  
Mr. and Mrs. John R. Hupper  
Peter Jennings and Kayce Freed  
Mr. and Mrs. Christopher M. Lehman  
Arthur L. Loeb  
Mr. and Mrs. Earl I. Mack  
C. C. Marsh  
Mr. and Mrs. John McGarry  
Mr. and Mrs. Frank N. Newman  
Mr. and Mrs. Bernard G. Palitz  
Mr. and Mrs. Paul G. Pennoyer, Jr.  
Mrs. John Pierrepont\*  
Mr. and Mrs. Eben W. Pyne  
David Rockefeller  
Henry and Mary Rodgers Guettel  
Seneca Capital Management  
Mr. and Mrs. H. R. Slack  
Edmund M. and Elizabeth Speer  
Mr. and Mrs. David Stam  
Dr. and Mrs. Donald Straus

*The Frick Collection makes every effort to recognize gifts as requested. Corrections may be directed to Nicole Blackwell at (212) 547-0709.*

\* deceased

# STATEMENT OF FINANCIAL POSITION

December 31, 2003, with comparative December 31, 2002, totals (Note 1)

<b>Assets:</b>	2003	2002
Cash and cash equivalents	\$ 2,141,377	\$ 2,806,868
Contributions receivable	537,433	685,749
Accrued interest and dividends	288,736	224,143
Due from broker		
for securities sold	358,626	641,443
Other assets	910,588	1,123,035
Inventory	785,663	837,329
<i>Investments, at market:</i>		
Museum	163,880,031	144,206,076
Library	46,627,395	40,792,098
<i>Fixed assets, net:</i>		
Museum	17,906,663	17,532,541
Library	1,954,728	1,888,497
Prepaid pension cost	794,471	1,345,239
	—	—
<b>Total assets</b>	<b>\$ 236,185,711</b>	<b>\$ 212,083,018</b>
	—	—
<b>Liabilities and Net Assets:</b>		
Accounts payable and		
accrued expenses	\$ 2,753,546	\$ 1,590,271
Due to broker for		
securities purchased	708,945	1,187,524
Accrued postretirement health		
and other benefits	4,422,935	4,089,000
	—	—
<b>Total liabilities</b>	<b>7,885,426</b>	<b>6,866,795</b>
<i>Net assets:</i>		
Unrestricted	198,332,037	171,061,655
Temporarily restricted	4,099,246	8,369,566
Permanently restricted	25,869,002	25,785,002
	—	—
<b>Total net assets</b>	<b>228,300,285</b>	<b>205,216,223</b>
	—	—
<b>Total liabilities and net assets</b>	<b>\$ 236,185,711</b>	<b>\$ 212,083,018</b>
	—	—

## Note 1

For purposes of brevity, the December 31, 2003 and 2002 financial information presented herein is excerpted from our audited financial statements as prepared by the independent accounting firm of PriceWaterhouseCoopers, LLP, which rendered an unqualified opinion as to those statements' conformance with generally accepted accounting principles. This excerpted information does not include the Statement of Cash Flows or the footnotes that are integral to a full presentation of the Collection's financial position. A complete Report of the Independent Auditors is available by writing to the Development Office of The Frick Collection.

## Note 2: Measure of operations

The Collection includes in its definition of operations all revenues and expenses that are an integral part of its programs and supporting activities. The measure of operations includes investment income equal to the 4.5% spending rate (see Note 3 below) and excludes investment return in excess of, or less than, the 4.5% spending rate and depreciation of fixed assets. The measure of operations also excludes unsolicited, unrestricted contributions of \$50,000 or more, as these contributions are board designated for long-term investment as funds functioning as endowment.

## Note 3: Spending rate

The Frick Collection's investments are pooled to facilitate their management. The Collection manages its pooled investments on a total return basis. To preserve the investments' long-term purchasing power, the Collection makes available to be spent each year 4.5% of the investment portfolio's average market value for the twelve quarters ending the September prior to the beginning of the year, net of related fees and taxes.

# STATEMENT OF ACTIVITIES

For the year ended December 31, 2003, with comparative totals for 2002

	Unrestricted			Temporarily Restricted	Permanently Restricted	Total	
	General	Board Designated	Total			2003	2002
<b>Operating support and revenues</b>							
Net investment return – 4.5% spending policy	\$ 8,867,874	\$ –	\$ 8,867,874	\$ –	\$ –	\$ 8,867,874	\$ 9,191,102
Other interest income	9,291	6,518	15,809	7,494		23,303	39,678
Contributions	1,192,373		1,192,373	652,375		1,844,748	3,848,196
Admission fees	2,275,433		2,275,433			2,275,433	1,915,386
Membership	1,112,473		1,112,473			1,112,473	1,160,470
Bookstore sales and miscellaneous	1,215,885		1,215,885			1,215,885	1,050,985
	14,673,329		14,679,847	659,869	–	15,339,716	17,205,817
Net assets released from restrictions	1,577,145		1,577,145	(1,577,145)			
<b>Total operating support and revenues</b>	<b>16,250,474</b>		<b>16,256,992</b>	<b>(917,276)</b>	<b>–</b>	<b>15,339,716</b>	<b>17,205,817</b>
<b>Operating expenses</b>							
<i>Museum programs:</i>							
Operations	4,138,283		4,138,283			4,138,283	4,178,556
Special exhibitions, concerts, and lectures	1,643,532		1,643,532			1,643,532	932,899
Bookstore, including cost of sales	884,660		884,660			884,660	825,656
<b>Total museum programs</b>	<b>6,666,475</b>	<b>–</b>	<b>6,666,475</b>	<b>–</b>	<b>–</b>	<b>6,666,475</b>	<b>5,937,111</b>
<i>Library programs:</i>							
Operations	2,871,954		2,871,954			2,871,954	2,941,263
Special programs	321,235		321,235			321,235	240,877
<b>Total library programs</b>	<b>3,193,189</b>	<b>–</b>	<b>3,193,189</b>	<b>–</b>	<b>–</b>	<b>3,193,189</b>	<b>3,182,140</b>
<b>Total programs</b>	<b>9,859,664</b>	<b>–</b>	<b>9,859,664</b>	<b>–</b>	<b>–</b>	<b>9,859,664</b>	<b>9,119,251</b>
<i>Supporting services:</i>							
General and administrative	6,299,619		6,299,619			6,299,619	5,099,119
Fundraising	959,764		959,764			959,764	1,053,517
<b>Total supporting services</b>	<b>7,259,383</b>	<b>–</b>	<b>7,259,383</b>	<b>–</b>	<b>–</b>	<b>7,259,383</b>	<b>6,152,636</b>
<b>Total operating expenses</b>	<b>17,119,047</b>	<b>–</b>	<b>17,119,047</b>	<b>–</b>	<b>–</b>	<b>17,119,047</b>	<b>15,271,887</b>
<b>Excess (deficiency) of operating support and revenues over operating expenses</b>	<b>(868,573)</b>	<b>6,518</b>	<b>(862,055)</b>	<b>(917,276)</b>	<b>–</b>	<b>(1,779,331)</b>	<b>1,933,930</b>
<b>Nonoperating</b>							
Contributions					84,000	84,000	30,000
Depreciation		(1,174,875)	(1,174,875)			(1,174,875)	(986,221)
Commitments and Contingencies	(1,200,000)		(1,200,000)			(1,200,000)	
Reclassification of unrealized gains		5,007,704	5,007,704	(5,007,704)			–
Net investment return designated for long-term investment		25,499,608	25,499,608	1,654,660		27,154,268	(23,688,694)
<b>Total nonoperating support revenue and expenses</b>	<b>(1,200,000)</b>	<b>29,332,437</b>	<b>28,132,437</b>	<b>(3,353,044)</b>	<b>84,000</b>	<b>24,863,393</b>	<b>(24,644,915)</b>
<b>Change in net assets</b>	<b>(2,068,573)</b>	<b>29,338,955</b>	<b>27,270,382</b>	<b>(4,270,320)</b>	<b>84,000</b>	<b>23,084,062</b>	<b>(22,710,985)</b>
Net assets, beginning of year	\$ 7,663,998	\$ 163,397,657	\$ 171,061,655	\$ 8,369,566	\$ 25,785,002	\$ 205,216,223	\$ 227,927,208
Net assets, end of year	\$ 5,595,425	\$ 192,736,612	\$ 198,332,037	\$ 4,099,246	\$ 25,869,002	\$ 228,300,285	\$ 205,216,223

See accompanying notes.



## The Frick Collection Staff as of January 2004

Anne L. Poulet  
*Director*

Yuri Ito  
*Executive Assistant to the Director*

### *Administration & Finance Department*

Robert Goldsmith  
*Deputy Director*

Martha Hackley  
*Executive Assistant to Deputy Director*

Michael Paccione  
*Controller*

Chuyon Yi  
*Financial Analyst*

Diane Oatman  
*Payroll/Benefit Coordinator*

William Guy Traylor  
*Accounting Coordinator*

Dana Winfield  
*Head of Human Resources*

Lisa Foerster  
*Purchasing and Supply Room Assistant*

Nigel Sifantus  
*Mailroom Clerk*

### *Curatorial Department*

Colin B. Bailey  
*Chief Curator*

Margaret Iacono  
*Curatorial Assistant to the Chief Curator*

Denise Allen  
*Associate Curator*

Richard di Liberto  
*Photographer*

Diane Farynyk  
*Registrar/Exhibition Manager*

Susan Grace Galassi  
*Curator*

Amy Herman  
*Head of Education*

Elaine Koss  
*Editor*

Christine Minas  
*Curatorial/Registrarial Assistant*

Barbara O. Roberts  
*Objects Conservator*

Joanna Sheers  
*Administrative Assistant  
to the Curatorial Department*

William Trachet  
*Senior Conservation Technician*

Meredith Watson  
*Education Liaison*

Yvonne Elet  
*Andrew W. Mellon Fellow*

Holly Flora  
*Andrew W. Mellon Fellow*

### *Public Programming*

Joyce Bodig  
*Coordinator of Concerts and Special Events*

### *Frick Art Reference Library*

Patricia Barnett  
*Andrew W. Mellon Librarian*

### *Library Administration Department*

Mary Ann E. Kelly  
*Assistant to the Chief Librarian/  
Coordinator for Library Administration*

Jennifer L. Lackow  
*Library Assistant for Administration*

### *Public Services Department*

Lydia Dufour  
*Chief, Public Services*

Suzannah Massen  
*Assistant Reference Librarian  
for Electronic Resources*

Mariko Iida  
*Reference Associate*

Carol Yoshimura  
*Library Associate for Public Services*

Eddie Jones (p.t.)  
Georgette Victor (p.t.)  
*Receptionists*

Ian Titus  
*Manager of Pages*

Lorenzo De Los Angeles  
Luciano Johnson  
Anthony Redding  
*Senior Pages/Technicians*

Brian D. Goldberg (p.t.)  
Amanda T. Wheeler (p.t.)  
*Pages/Technicians*

### *Conservation Department*

Don Swanson  
*Chief, Collections Preservation*

Jerilyn Davis  
*Conservator*

Kelli Piotrowski  
*Assistant Conservator*

Michael Houk  
*(Digital & Reprographic Services)  
Preservation Associate*

Felix Esquivel  
*Conservation Assistant*

Stephanie Mezynski (p.t.)  
*Conservation Clerk*

Luke Barnett IV (p.t.)  
*Stack Reconfiguration Coordinator*

### *Book Department*

Deborah Kempe  
*Chief, Collections  
Management & Access*

Mark Bresnan  
*Head, Bibliographic Records*

Rodica Tanjala Krauss  
*Coordinator (Recon Project)*

Paul Schuchman  
*Associate Cataloger*

Eric Wolf  
*Assistant Cataloger*

Christina Peter (*Acquisitions*)  
Jesse Sadia (*Auction Sale Catalogues*)  
Amy Schwarz (*Periodicals*)  
*Cataloging Associates*

Charles Basman  
Alida Lasker (*Recon Project/Acquisitions*)  
Sean M. McCarthy (p.t., *Recon Project*)  
*Cataloging Assistants*

Aimee Genell (*Special Projects*)  
Anthony Jones  
*Acquisitions Assistants*

### *Photoarchive Department*

Inge Reist  
*Chief, Collections Development & Research*

Kerry Sullivan  
*Head, Photographic Records*

Louisa Wood Ruby  
*Associate Photoarchivist*

Dorothy Devenney (p.t.)  
Rita Havivi (p.t.)  
Britta Von Campenhausen (p.t.)  
*Assistant Photoarchivists*

Angela Campbell  
Valeria Kondratiev (p.t.)  
Margaret Rose (p.t.)  
*Photoarchive Assistants*

### *Information Systems Department (Institution-wide)*

Floyd Sweeting  
*Head, Information Systems*

Brian Nichols  
*Manager of Information Technology*

Vivian Gill  
*Manager of Digital Information & Electronic Publications*

Julie Shean  
*Database Coordinator*

Spencer Sutton  
*Help Desk Coordinator*

John Ng  
*Network & PC Support/Technical Assistant*



Reginald Oleus (p.t.)  
*PC Support/ Technical Assistant*

### *Archives & Records Management Department (Institution-wide)*

Sally Brazil (p.t.)  
*Chief, Archives & Records Management*

Susan Chore  
Julie Ludwig (HCCFF Project)  
*Assistant Archivists*

Marcia Bassett (p.t.)  
*Project Archivist*

### *Department of External Affairs*

Martin Duus  
*Vice Director for External Affairs*

Rebecca Brooke  
*Manager of Publications*

Amy Busam  
*Manager of Corporate and Foundation Relations*

Mary Emerson  
*Manager of Major Gifts*

Heidi Rosenau  
*Manager of Media Relations & Marketing*

Stephanie Ruggiero  
*Media Relations & Marketing Coordinator*

### *Sales and Information Department*

Katherine Gerlough  
*Head of Retail and Visitor Services*

Christine Kim  
*Assistant to the Head of Retail  
and Visitor Services*

Nancy McGeorge (seasonal)  
*Sales and Information Coordinator*

Susan Tabor (seasonal)  
*Sales and Information Coordinator*

Stephanie Abraitis  
Muriel Balash

Deborah Black  
Rujeanne Bleemer

Zoe Browder  
Elizabeth Bukac

Nina Coates  
Janice Dugan

Barbara Feldkamp  
Coral Groh

Marla Hansen  
Ann Jaffe

Dieynaba Johnson  
Jacqueline Reeves

Monica Sands  
Mandakini C. Tata

Jonathan Tuzo  
*Sales and Information Staff (p.t.)*

Aaron Dugan  
*Stock Clerk*

Reid Taylor  
*Mail and Stock Clerk*

### *Operations Department*

Dennis F. Sweeney  
*Head of Operations*

#### *Engineering*

Joseph Corsello  
*Chief Engineer*  
Colm McCormac  
*Assistant Chief Engineer*

Charles W. Bulanowski  
John Kowalski  
Roger Legendre  
Harold Millin  
Thomas Puglia  
Mikhail Shusterman  
*Engineers*

Wilfred Maldonado  
*Head Electrician*

#### *Maintenance*

Brian A. Anderson  
*Senior Galleries Technician*  
Carol Cannon  
*Building Maintainer/Gallery Technician*

#### *Housekeeping*

Mireya Romero  
*Supervisor of Housekeeping*  
Winston McLeod  
*Assistant Housekeeping Supervisor*

John Benson  
Marie Brann  
Soeurette Etienne  
Kalu Gaviria  
Berthie Lazare  
Ronald Moliere  
Louisa Moreau  
Mahadeo Nipal  
Juan Pereya  
Jairo Rodriguez  
Jose Sanchez  
*Housekeepers*

#### *Kitchen*

Joseph Teresa  
*Executive Chef/Kitchen Manager*

Joanne Duda  
*Sous Chef*

Theana Bernadotte  
Conceptia Saintil  
*Kitchen Assistants*

#### *Horticulture*

Karl Galen Lee  
*Horticulturalist and Special Events Designer*

Bernadette Morrell (p.t.)  
*Flower Arranger*

#### *Security*

Dominic Phillips  
*First Lieutenant for Security*

Daniel Charles  
*Second Lieutenant for Security*

Gloria Blanc-Jaiteh  
Pierre Jean-Francois  
*Sergeants*

Lance Hartman  
Delroy Slater  
*Night Shift Supervisors*

Ainsworth Anderson  
*Relief Night Supervisor*

Sabane Adinda-Ougba  
Pierre Bernadotte

Dwain Bredwood  
Elizabeth Cacovic

Daniel Campbell  
Jamal Carson

Digna Delance  
Lesly Desmangles

Borgia Espinal  
Leroy Evans

Daniel O. Faakye  
Mara Gjelijaj

Theodore Glover  
Alexey Gryaznov

Ana Gutierrez  
Pearl James

Devaindranauth Jamunaprasad  
Herve Jean-Baptiste

Billy Jean-Elysee  
Marlene Joseph

Joanel Legiste  
Joseph Levasseur

James LoBosco  
Guerline Louisdor

Jean Mayard  
Hugh McMorris

Elliot Meadows  
Riviere Moreau

Edward Peana  
Chunilall Rangasamy

James Smith  
Richard Spencer

Shivekarran Tillack  
Garfield Walker

Brian Williams  
*Guards*

John A. Baker  
Jason Fraticelli

Keisha Hernandez  
Stephanie Kirksey

Emmanuel Piton  
Avelardita Taveras

*Coatroom Attendants*

## FALL CALENDAR

Concerts, lectures, and special exhibitions are made possible through the generosity of the Fellows of The Frick Collection and other donors.

## SEPTEMBER

### Opening Reception for *European Bronzes from the Quentin Collection*

Fellows Event *Monday, September 27, at 5:30*

### Learning by Doing: Cataloging European Old Master Bronzes in the Quentin Collection

Lecture *Wednesday, September 29, at 6:00*

Manfred Leithe-Jasper, Director Emeritus, Department of Sculpture and Decorative Arts, Kunsthistorisches Museum Vienna

The experiences gained from cataloging bronze statuettes often provide new insights into the works of even well-known sculptors such as Giambologna. In conjunction with the Frick's special fall exhibition, Dr. Leithe-Jasper will discuss the process, progress, and surprises afforded by cataloging the Quentin bronzes, focusing on two of Giambologna's most famous compositions, the *Striding Mars* and *Sleeping Nymph*.

### Cocktails on the Garden Terrace

Young Fellows Event

*Thursday, September 30, at 6:30*

Sponsored by Ralph Lauren Home

## OCTOBER

### The Mozartean Players, *violin, cello, forte-piano: Mozart; Haydn; Beethoven, Trio in G Major, Opus 1, No. 2*

Concert *Sunday, October 3, at 5:00*

This concert is part of the New York Early Music Celebration.

### Fretwork, *consort of five viols with soprano Emma Kirkby: Byrd, Gibbons, Dowland, Tye*

Concert *Sunday, October 17, at 5:00*

### Autumn Dinner

Fellows Event *Monday, October 18, at 7:00*

Robert Hughes will be honored.

### Joseph Duveen: Kingpin of Art

Lecture *Wednesday, October 20, at 6:00*

Meryle Secrest, biographer

Henry Clay Frick bought a number of works in his collection from Joseph Duveen, arguably the most important art dealer of the twentieth century. The lecturer, author of a new biography of Lord Duveen, will discuss his life, career, and relationship with Mr. Frick.

## NOVEMBER

### Gaede Trio in New York debut: Mozart, Beethoven, Ysaÿe, Dohnanyi

Concert *Sunday, November 14, at 5:00*

### La Fornarina: Raphael's Last and Most Surprising Masterpiece

Lecture *Tuesday, November 30, at 6:00*

Claudio Strinati, Superintendent of the National Museums of Rome

In conjunction with a special loan to The Frick Collection from the Palazzo Barberini in Rome, this lecture will examine the legend surrounding Raphael's celebrated portrait and place it in an artistic and historical context.

## DECEMBER

### Gauguin's Paradise Lost

Lecture *Wednesday, December 1, at 6:00*

George Shackelford, Museum of Fine Arts, Boston

George Shackelford, co-curator of the recent international exhibition *Gauguin Tahiti*, will discuss the artist's voyage to the South Seas and his creation of a dream vision of a new Paradise.

### Eduardus Halim, *piano: Liszt; Schumann; Granados, Goyescas*

Concert *Sunday, December 5, at 5:00*

## JANUARY

### Aston Magna, *two violins, viola, cello, with Eric Hoeprich, classical clarinet: quintets by Weber and Mozart; Onslow, Quartet in G Minor*

Concert *Sunday, January 9, at 5:00*

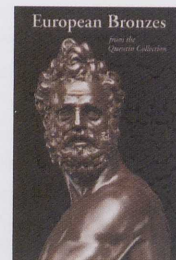
### Jean-Claude Pennetier, *piano: Ravel; Fauré; Debussy, 12 Preludes, Book 1*

Concert *Sunday, January 23, at 5:00*

## MUSEUM SHOP

The Museum Shop offers a wide selection of scholarly and popular titles, stationery, prints, and special gift items related to the Frick's exhibitions and collections. You can visit our shop during regular Collection hours or purchase items online at [www.frick.org](http://www.frick.org).

Members receive a 10 percent discount on all shop purchases.



### European Bronzes from the Quentin Collection

360 pages;  
cloth \$125

Lectures are open to the public without charge thirty minutes before the event.

Concert tickets, limited to two per applicant, are issued in response to written requests received on the third Monday before the concert. Please direct requests to the Concert Department and enclose a stamped, self-addressed envelope. Each request should be for only one concert. No hand-delivered or telephone applications will be accepted. Children under ten are not admitted.

Ticket holders must be seated at least five minutes before the concert, at which time unoccupied chairs are made available to persons on the waiting line. The program also will be transmitted in the Garden Court, where no tickets are required.

Fellows of The Frick Collection may request concert tickets by telephone. To become a Fellow, please contact Mary Emerson at (212) 547-6870.



RICHARD DI LIBERTO

## Friends

**Individual \$60** fully tax deductible

**Non-Resident Friend \$40** fully tax deductible  
(beyond 100 miles from New York City)

**Student \$25** fully tax deductible  
(must include copy of valid full-time ID)

- Unlimited free admission for one
- 10% discount on purchases at the Museum Shop
- Subscription to the Frick *Members' Magazine*
- New members reception

**Dual \$90** fully tax deductible  
(any two persons at the same address)

- All the above plus
- Unlimited free admission for two

**Contributing Friend \$200** all but \$60 tax deductible

- All the above plus
- Unlimited free admission for four
  - Invitation to Holiday Shopping Evening

**Supporting Friend \$400** all but \$90 tax deductible

- All the above plus
- Reciprocal benefits at selected museums
  - Special tour of The Frick Collection and Frick Art Reference Library
  - Specially selected Frick exhibition catalogue
  - Acknowledgment in the Annual Report

**Sustaining Friend \$600** all but \$130 tax deductible

- All the above plus
- Invitations to selected exhibition receptions

## Fellows

**Fellow \$1,000** all but \$340 tax deductible

**Non-Resident Fellow \$800** all but \$300 tax deductible  
(beyond 100 miles from New York City)

**Young Fellow \$500** all but \$340 tax deductible  
(under age 39)

- All the benefits of a Sustaining Friend plus
- Invitations to the Spring Party and all exhibition openings
  - Special Fellows events and openings
  - Advance reservation of concert tickets

If you would like information about the benefits of higher levels of membership, please contact Mary Emerson at (212) 547-6870.

The *Members' Magazine* is published three times a year by The Frick Collection as a benefit for its members.

Volume 4, Number 3  
ISSN: 1534-6412  
Editor: Rebecca Brooke

**Salomon van Ruysdael** (1600?-1670),  
detail of *River Scene: Men Dragging a Net*,  
c. 1667, oil on canvas, The Frick Collection

## The Frick Collection Membership Application

Please renew my membership at the following level:

I wish to join at the following level:

- |  |   |
|--|---|
| <input type="checkbox"/> Individual \$60           | <input type="checkbox"/> Supporting Friend \$400              |
| <input type="checkbox"/> Non-Resident Friend \$40  | <input type="checkbox"/> Sustaining Friend \$600              |
| <input type="checkbox"/> Student \$25              | <input type="checkbox"/> Fellow \$1,000                       |
| <input type="checkbox"/> Dual \$90                 | <input type="checkbox"/> Non-Resident Fellow \$800            |
| <input type="checkbox"/> Contributing Friend \$200 | <input type="checkbox"/> Young Fellow \$500<br>(under age 39) |

Mr./Ms./Mrs./Miss/Mr. and Mrs./Name

Mr./Ms./Mrs./Miss/Mr. and Mrs./Second Name

Address

City State ZIP

Daytime Phone Evening Phone

I am particularly interested in the  
Library's programs.

This is a gift membership from:

Mr./Ms./Mrs./Miss/Mr. and Mrs./Name

Address

City State ZIP

Daytime Phone Evening Phone

Enclosed is my payment of \$ \_\_\_\_\_.

Please make your check payable to  
The Frick Collection.

- Charge my  
 VISA  MasterCard  American Express

Account number

Expiration date

For additional membership information, please call  
the Membership Department at (212) 547-0707.

Please detach and return with your payment to

The Frick Collection  
Membership Department  
1 East 70th Street  
New York, NY 10021

## The Frick Collection

1 East 70th Street  
New York, NY 10021  
(212) 288-0700

## Collection Hours

10:00 to 6:00 Tuesday through  
Saturday; 1:00 to 6:00 Sundays;  
closed Mondays and holidays

## Admission

Members receive unlimited free  
admission to The Frick Collection.  
Adults, \$12.00; \$8.00 for seniors;  
\$5.00 for students. Children under ten  
are not admitted, and those under  
sixteen must be accompanied by an adult.

## Frick Art Reference Library

10 East 71st Street  
New York, NY 10021  
(212) 288-8700

## Library Hours

10:00 to 5:00 Monday through  
Friday; 9:30 to 1:00 Saturdays; closed  
Sundays, holiday weekends, Saturdays  
in June and July, and during the month  
of August

The Library is open to all researchers  
free of charge.

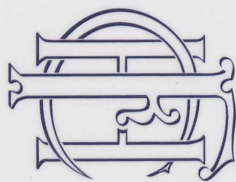
## Membership

For information regarding your mem-  
bership or to give a membership as a gift,  
please call the Membership Department  
at (212) 547-0707.

## The Museum Shop

The Museum Shop is open during  
regular Collection hours. For your con-  
venience, you may also purchase books,  
prints, and special gift items online at  
[www.frick.org](http://www.frick.org) or by telephone, at  
(212) 547-6848. Members always receive  
a 10% discount on all shop purchases.

Visit our website at [www.frick.org](http://www.frick.org)



## THE FRICK COLLECTION

1 East 70th Street  
New York, New York 10021  
INFORMATION (212) 288-0700  
[www.frick.org](http://www.frick.org)

Non Profit Org.  
U.S. POSTAGE PAID  
New York, NY  
Permit No. 537

## UPCOMING EXHIBITIONS

*European Bronzes from the Quentin Collection* • September 28, 2004, through January 2, 2005  
*Raphael's Fornarina* • December 2, 2004, through January 30, 2005

